

Georgia Tech Academic Effectiveness

May 23, 2018

Dear Colleague:

The Office of Academic Effectiveness has processed the 2017-2018 Course/Instructor Opinion Survey (CIOS) results for the Institute. For 73 academic terms (39 quarters and 34 semesters—excluding summer sessions), the Institute has been collecting data and reporting descriptive statistics that provide a basis for interpreting individual ratings.

The original survey was designed in 1986 and consisted of 26 questions, later reduced to 24 by eliminating questions about students' gender and ethnicity. In Fall 2011, a streamlined CIOS was implemented, which was designed by representatives of faculty, students, and administration. This new version reduced the number of core questions from 24 to 10 and eliminated cluster scores. In Summer 2011, representatives of faculty, students, and administration again met to assess the survey and revised it to better reflect the literature on survey design and to improve the quality of feedback for instructors.

The following report focuses on survey Item 10: *Considering everything, the instructor was an effective teacher*. This question has been maintained in the same form throughout all versions of CIOS. To provide the most meaningful comparisons with individual scores, statistics are reported for each term in the academic year and with cumulative results since Fall 2001. This format enables faculty to compare their scores with distributions for specific semesters and for multi-year periods. Central tendencies and distributions of the question are reported by class size category and by college, as well as for the entire Institute. Experience and general research confirm that class size is a primary variable explaining significant differences in ratings. The following notation may help you interpret the report:

- “*N*” is the number of classes in a particular population frame.
- “Median” is the middle value of an ordered array of classes' interpolated median scores.
- Columns “Cut 1,” “Cut 2,” “Cut 3,” and “Cut 4” indicate the quintile values (20th, 40th, 60th, and 80th percentiles) in the distribution. These values are also drawn on the accompanying charts for the cumulative distribution.
- Values range from 1 to 5, where 1 is “strongly disagree” and 5 is “strongly agree.”

We trust that these data are helpful to you. If you have any questions, feel free to contact Dr. Joe Ludlum at 404.385.1292 or <joe.ludlum@gatech.edu>

Joe Ludlum, PhD
Assistant Director for Academic Effectiveness
Office of Academic Effectiveness
<joe.ludlum@gatech.edu>

James Shawn Carnley
Sr. Web Developer
Office of Academic Effectiveness
<shawn.carnley@gatech.edu>

INSTITUTE-WIDE

Fall 2017

Class Size	N	Median	Cut 1	Cut 2	Cut 3	Cut 4
<16	1,298	4.80	4.00	4.67	4.88	5.00
16-35	1,369	4.63	4.00	4.50	4.75	4.88
36-99	768	4.50	3.85	4.26	4.66	4.83
>99	131	4.57	4.15	4.47	4.65	4.77

Spring 2018

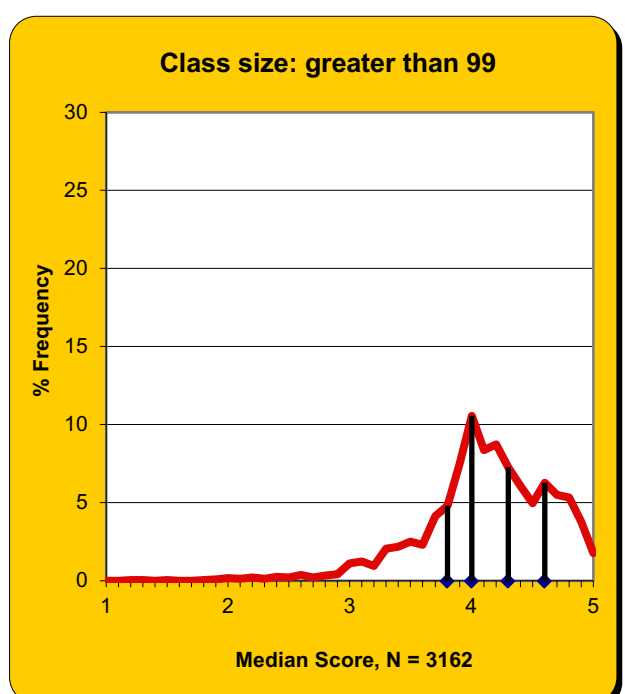
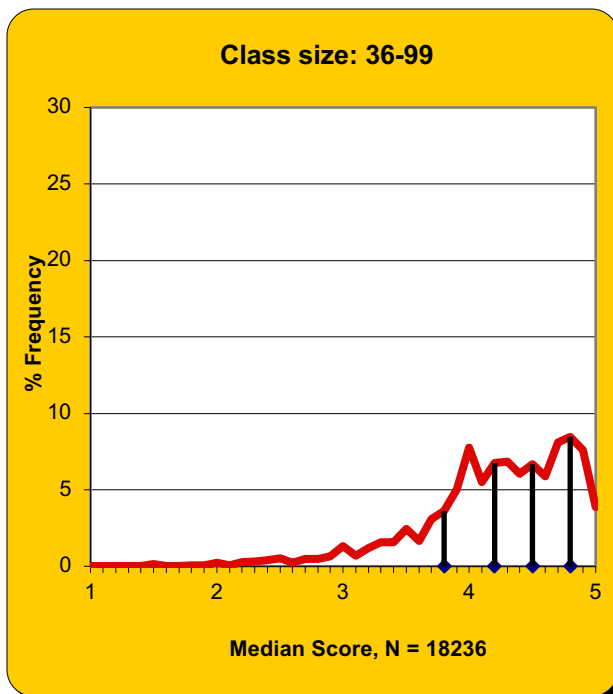
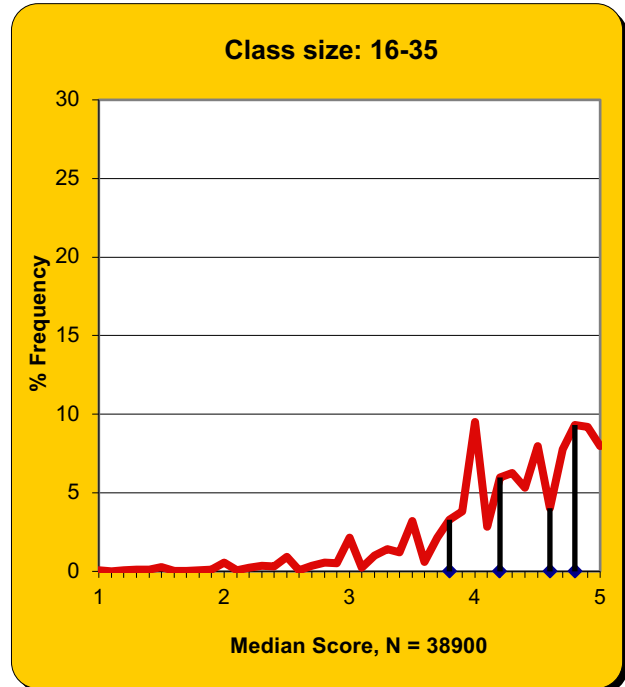
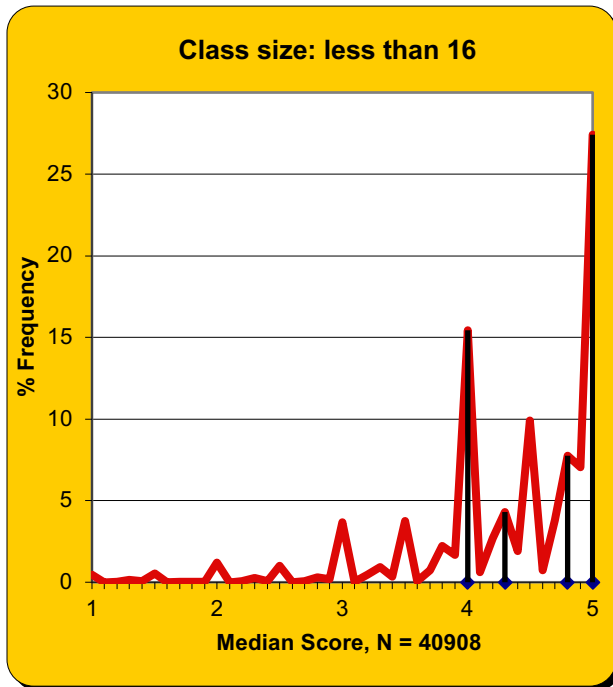
Class Size	N	Median	Cut 1	Cut 2	Cut 3	Cut 4
<16	1,383	4.83	4.00	4.69	4.90	5.00
16-35	1,219	4.60	4.00	4.42	4.71	4.89
36-99	649	4.57	3.88	4.38	4.68	4.86
>99	117	4.48	4.01	4.38	4.59	4.77

Fall 2001–Spring 2018

Class Size	N	Median	Cut 1	Cut 2	Cut 3	Cut 4
<16	40,908	4.50	4.00	4.35	4.75	5.00
16-35	38,900	4.40	3.83	4.22	4.58	4.80
36-99	18,236	4.30	3.80	4.15	4.50	4.75
>99	3,162	4.17	3.79	4.04	4.30	4.63

INSTITUTE-WIDE

Fall 2001–Spring 2018



COLLEGE OF DESIGN

Fall 2017

Class Size	N	Median	Cut 1	Cut 2	Cut 3	Cut 4
<16	123	4.75	4.20	4.75	4.88	5.00
16-35	76	4.63	4.23	4.50	4.75	4.91
36-99	32	4.68	4.22	4.60	4.75	4.92
>99	5	4.95	4.46	4.76	4.97	4.98

Spring 2018

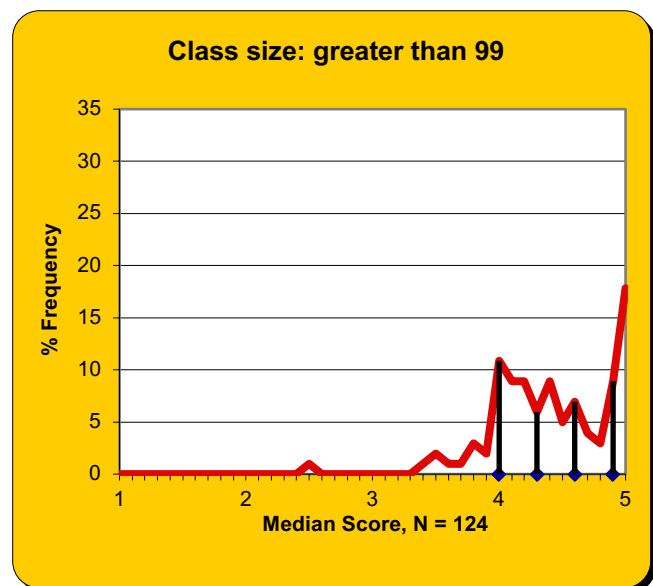
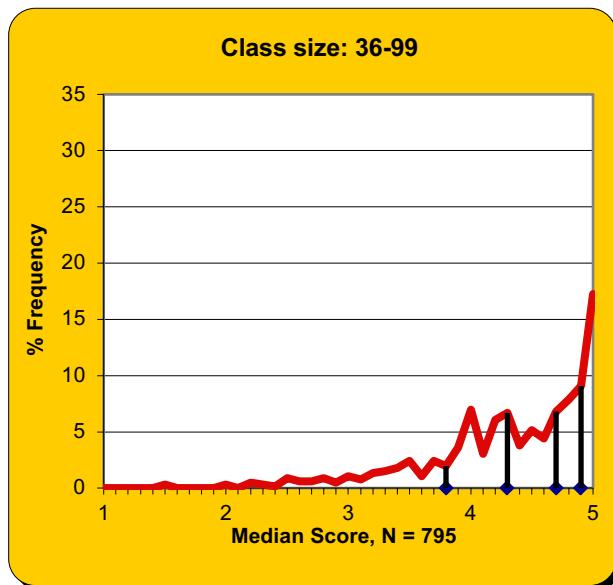
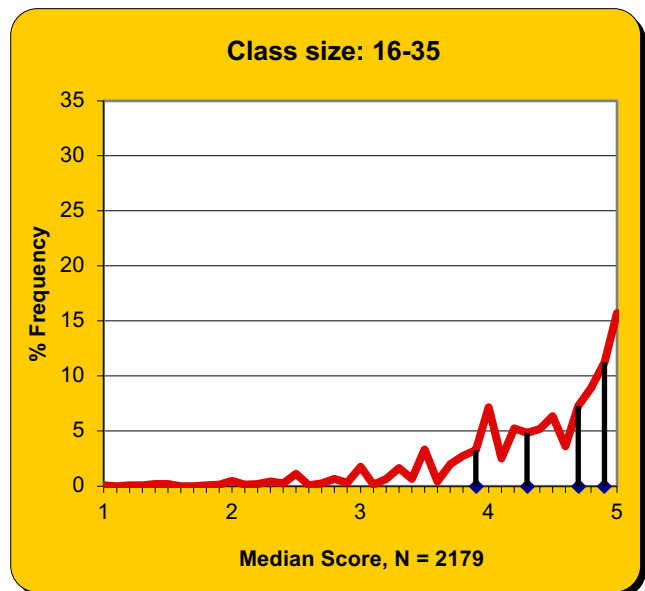
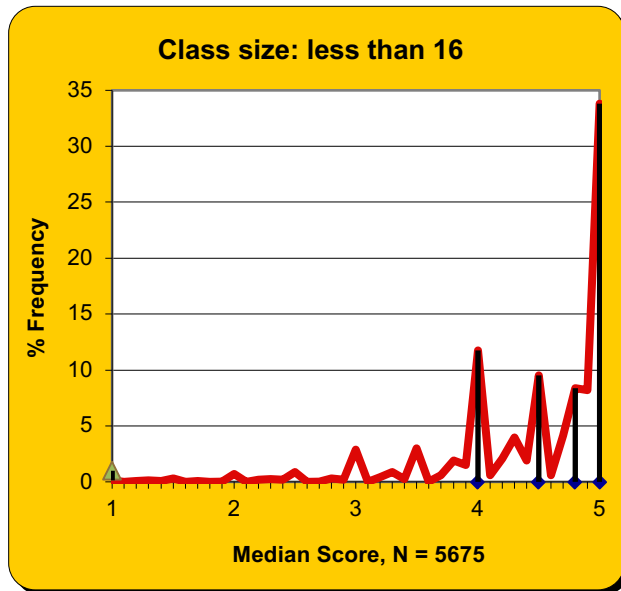
Class Size	N	Median	Cut 1	Cut 2	Cut 3	Cut 4
<16	154	4.90	4.17	4.80	5.00	5.00
16-35	62	4.59	4.00	4.50	4.75	4.91
36-99	25	4.57	3.23	4.45	4.75	4.92
>99	4	4.84	4.27	4.69	4.99	4.99

Fall 2001–Spring 2018

Class Size	N	Median	Cut 1	Cut 2	Cut 3	Cut 4
<16	5,675	4.75	4.00	4.50	4.83	5.00
16-35	2,179	4.50	3.93	4.33	4.70	4.89
36-99	795	4.50	3.85	4.27	4.67	4.90
>99	124	4.41	4.02	4.29	4.56	4.94

COLLEGE OF DESIGN

Fall 2001–Spring 2018



COLLEGE OF COMPUTING

Fall 2017

Class Size	N	Median	Cut 1	Cut 2	Cut 3	Cut 4
<16	62	4.85	4.17	4.71	4.94	5.00
16-35	66	4.69	4.00	4.54	4.73	4.87
36-99	125	4.33	3.30	4.08	4.52	4.80
>99	42	4.56	4.18	4.45	4.65	4.79

Spring 2018

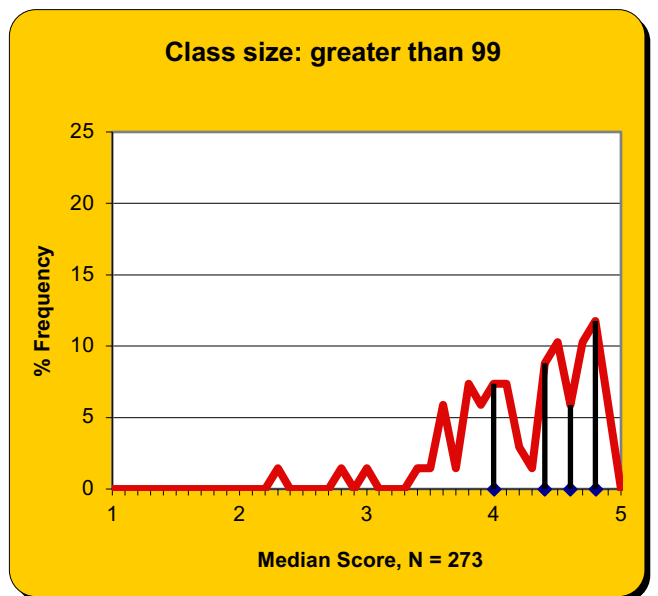
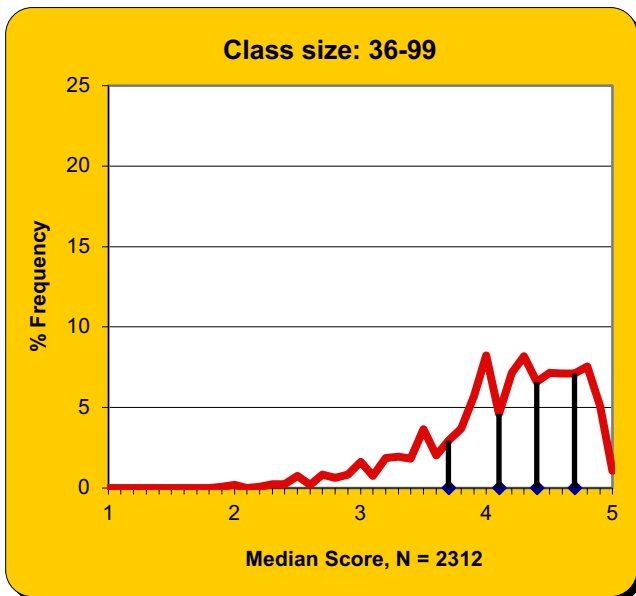
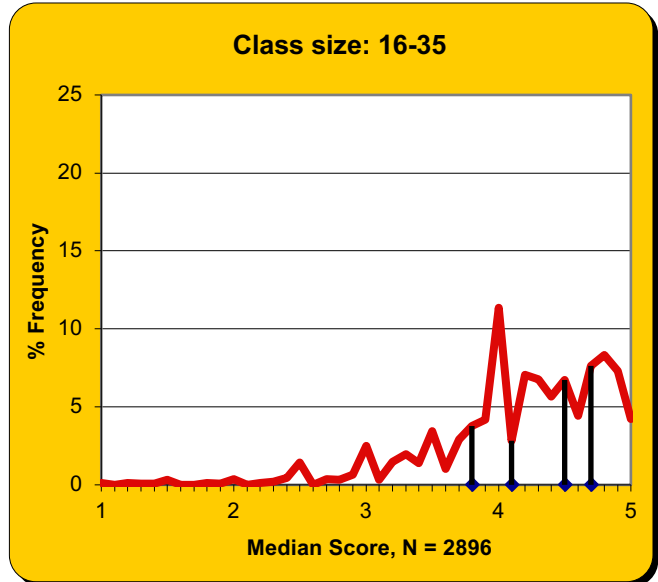
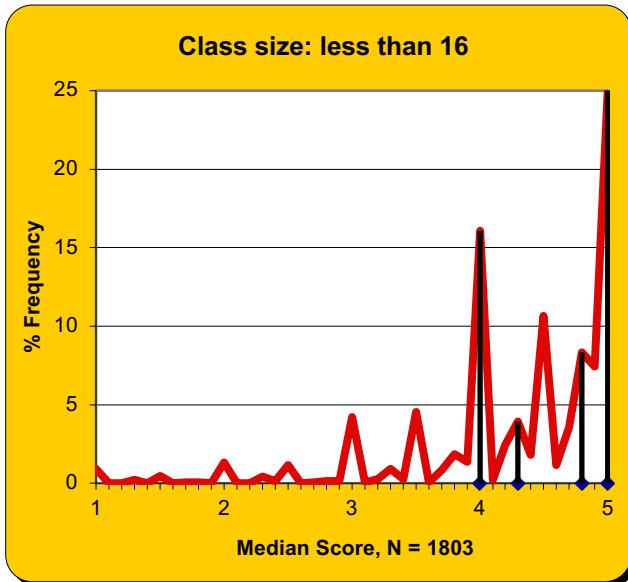
Class Size	N	Median	Cut 1	Cut 2	Cut 3	Cut 4
<16	44	4.83	4.33	4.81	5.00	5.00
16-35	51	4.50	3.33	4.24	4.68	4.86
36-99	127	4.57	3.81	4.40	4.66	4.84
>99	46	4.58	4.04	4.41	4.69	4.78

Fall 2001–Spring 2018

Class Size	N	Median	Cut 1	Cut 2	Cut 3	Cut 4
<16	1,803	4.50	4.00	4.33	4.75	5.00
16-35	2,896	4.25	3.75	4.13	4.50	4.73
36-99	2,312	4.25	3.69	4.10	4.40	4.69
>99	273	4.51	4.02	4.37	4.61	4.77

COLLEGE OF COMPUTING

Fall 2001–Spring 2018



COLLEGE OF ENGINEERING

Fall 2017

Class Size	N	Median	Cut 1	Cut 2	Cut 3	Cut 4
<16	488	4.50	3.83	4.39	4.75	5.00
16-35	391	4.50	3.83	4.25	4.58	4.82
36-99	349	4.34	3.81	4.17	4.56	4.82
>99	21	4.52	3.66	4.42	4.58	4.74

Spring 2018

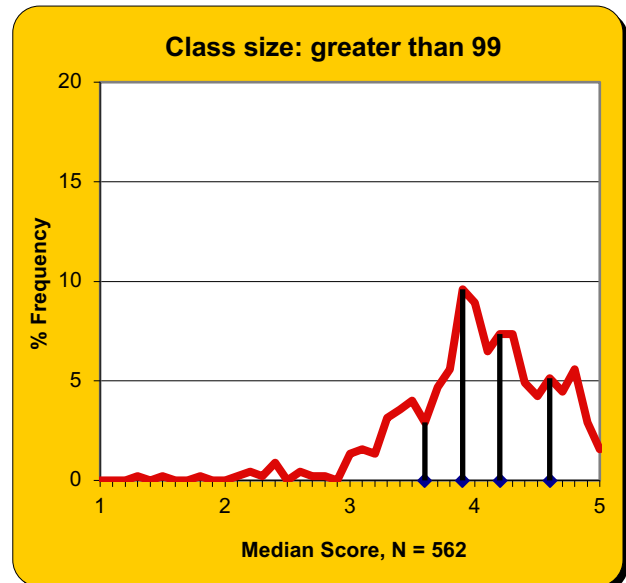
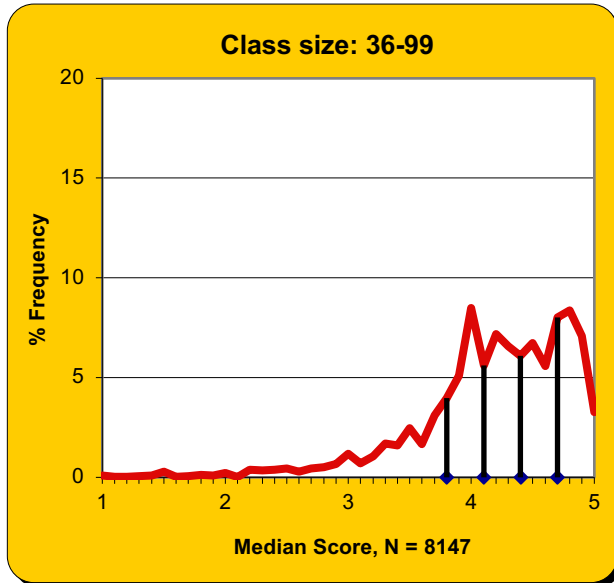
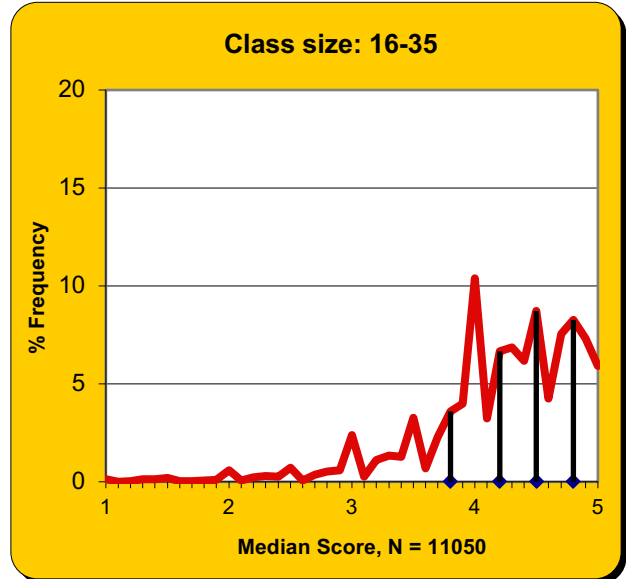
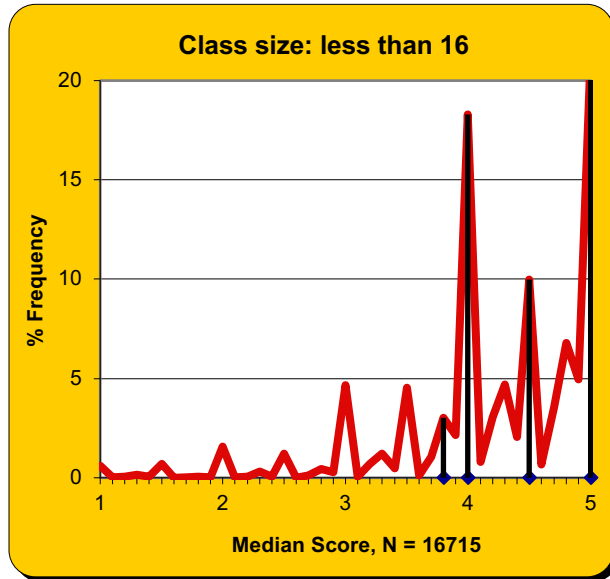
Class Size	N	Median	Cut 1	Cut 2	Cut 3	Cut 4
<16	566	4.63	3.75	4.33	4.76	5.00
16-35	429	4.38	3.90	4.19	4.56	4.83
36-99	298	4.48	3.75	4.25	4.61	4.81
>99	20	4.27	3.87	4.11	4.42	4.76

Fall 2001–Spring 2018

Class Size	N	Median	Cut 1	Cut 2	Cut 3	Cut 4
<16	16,715	4.38	3.75	4.00	4.50	5.00
16-35	11,050	4.31	3.80	4.17	4.50	4.75
36-99	8,147	4.27	3.78	4.12	4.44	4.72
>99	562	4.08	3.62	3.93	4.23	4.57

COLLEGE OF ENGINEERING

Fall 2001–Spring 2018



IVAN ALLEN COLLEGE

Fall 2017

Class Size	N	Median	Cut 1	Cut 2	Cut 3	Cut 4
<16	244	4.90	4.63	4.83	5.00	5.00
16-35	270	4.79	4.50	4.70	4.84	4.93
36-99	33	4.57	3.84	4.39	4.67	4.83
>99	16	4.44	3.70	4.15	4.51	4.70

Spring 2018

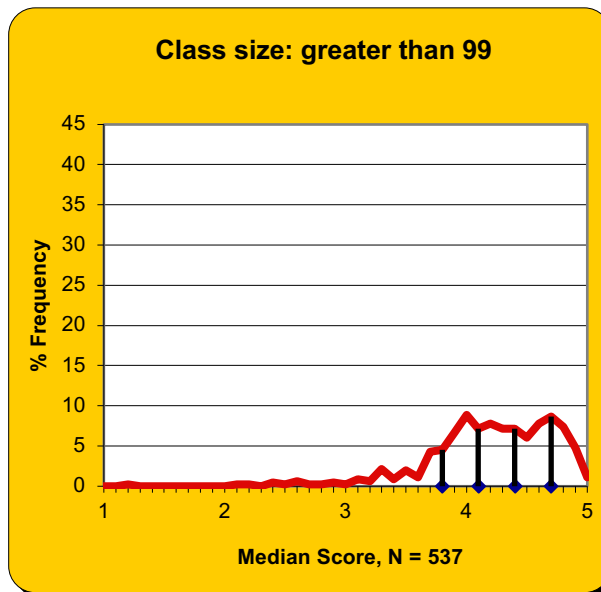
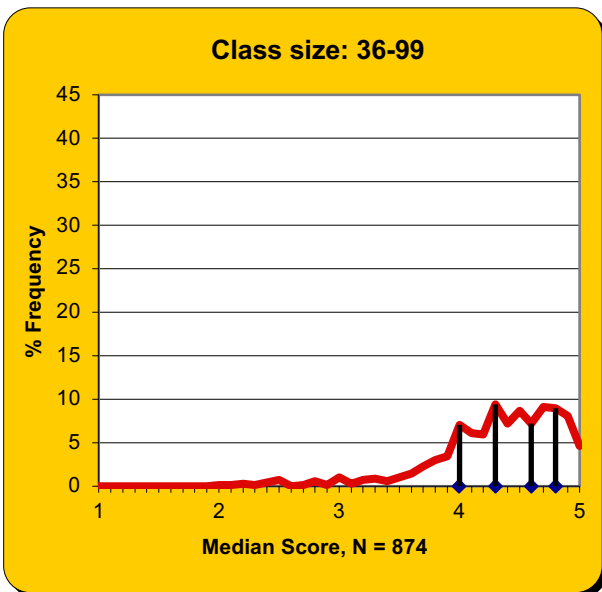
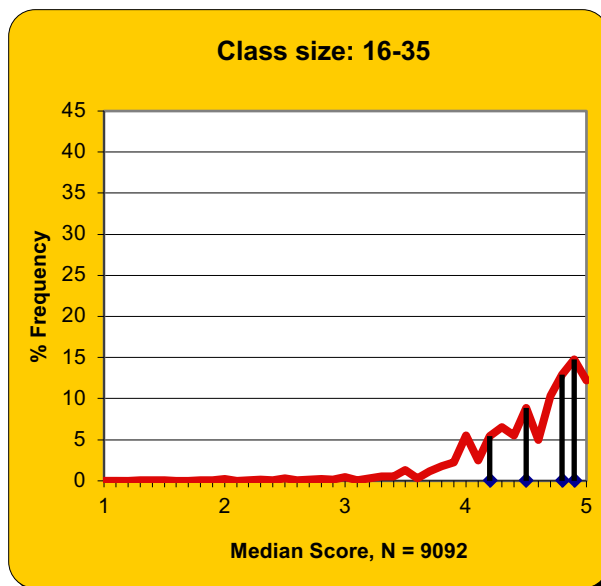
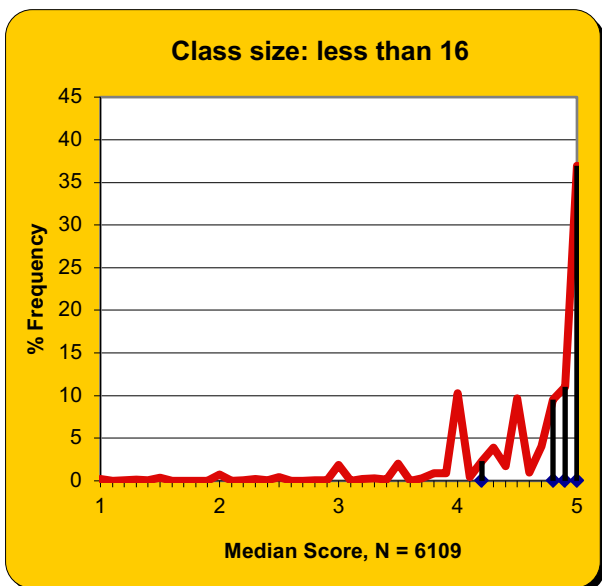
Class Size	N	Median	Cut 1	Cut 2	Cut 3	Cut 4
<16	247	4.89	4.50	4.80	5.00	5.00
16-35	254	4.83	4.42	4.77	4.88	4.93
36-99	31	4.73	4.32	4.61	4.78	4.89
>99	9	4.09	3.40	4.00	4.73	4.91

Fall 2001–Spring 2018

Class Size	N	Median	Cut 1	Cut 2	Cut 3	Cut 4
<16	6,109	4.83	4.17	4.75	4.90	5.00
16-35	9,092	4.66	4.17	4.50	4.75	4.88
36-99	874	4.42	4.00	4.29	4.56	4.77
>99	537	4.21	3.80	4.07	4.36	4.65

IVAN ALLEN COLLEGE

Fall 2001–Spring 2018



SHELLER COLLEGE OF BUSINESS

Fall 2017

Class Size	N	Median	Cut 1	Cut 2	Cut 3	Cut 4
<16	96	4.83	4.50	4.81	4.93	5.00
16-35	63	4.83	4.32	4.77	4.85	4.93
36-99	137	4.73	4.02	4.63	4.80	4.90
>99	0	NA	NA	NA	NA	NA

Spring 2018

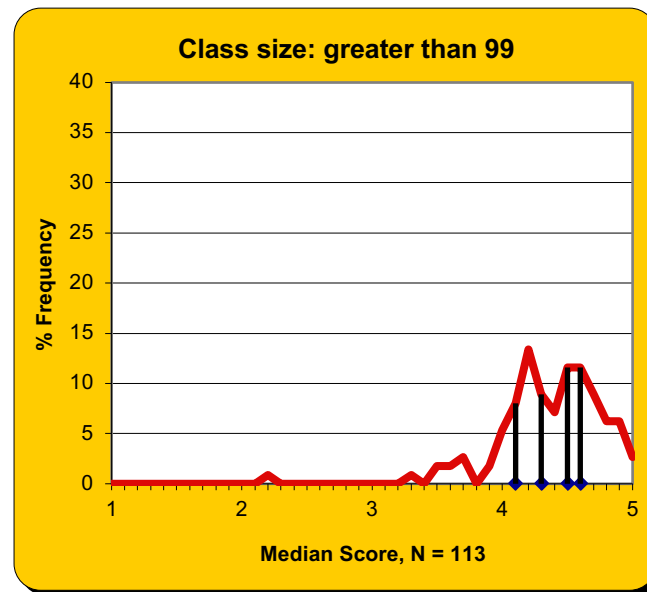
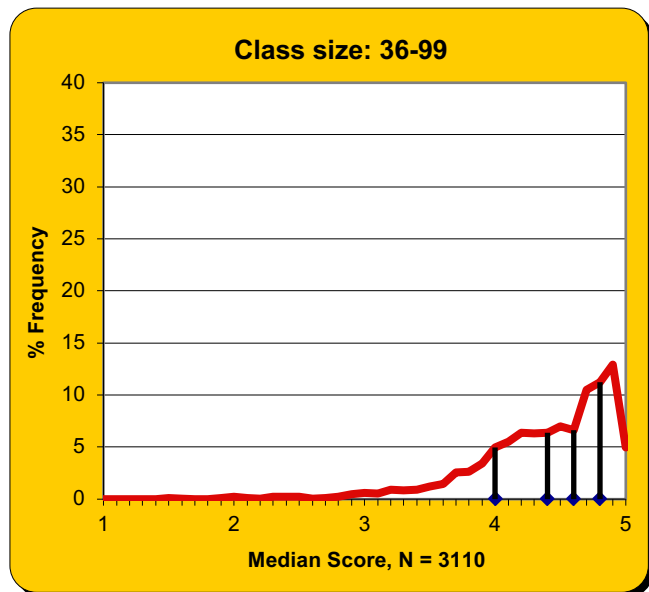
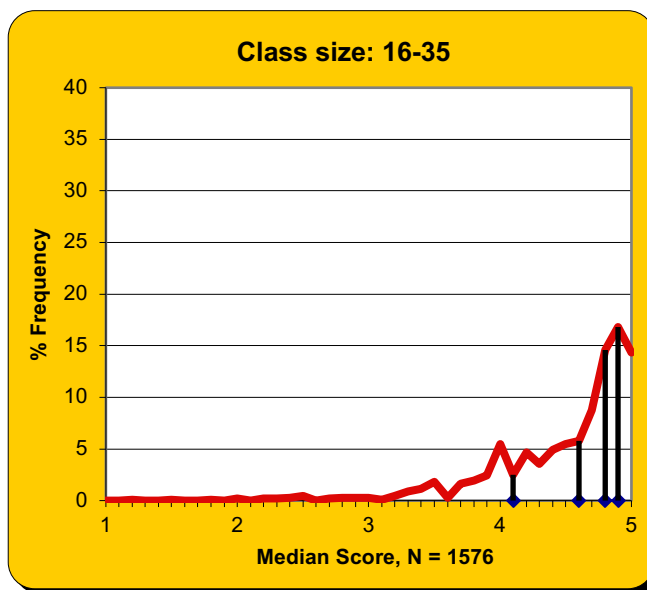
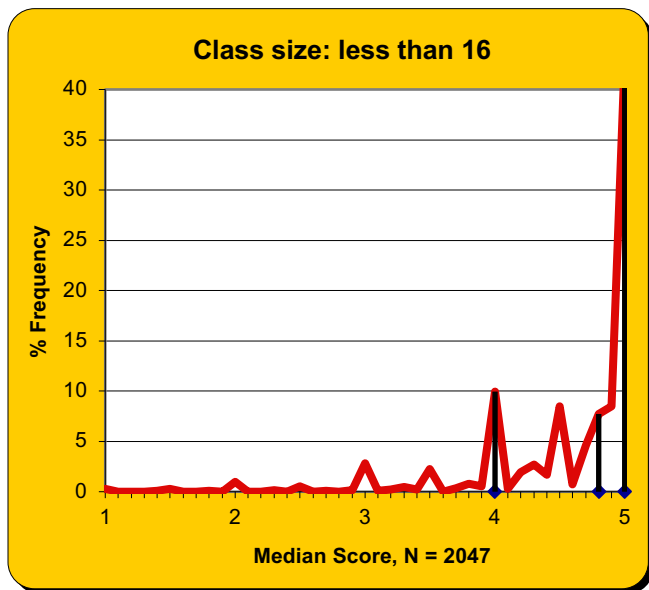
Class Size	N	Median	Cut 1	Cut 2	Cut 3	Cut 4
<16	95	5.00	4.18	4.85	5.00	5.00
16-35	99	4.75	4.00	4.63	4.84	4.92
36-99	90	4.75	4.04	4.63	4.81	4.92
>99	1	4.41	4.41	4.41	4.41	4.41

Fall 2001–Spring 2018

Class Size	N	Median	Cut 1	Cut 2	Cut 3	Cut 4
<16	2,047	4.83	4.00	4.75	5.00	5.00
16-35	1,576	4.70	4.10	4.58	4.78	4.90
36-99	3,110	4.53	4.00	4.36	4.64	4.82
>99	113	4.35	4.06	4.27	4.47	4.63

SCHELLER COLLEGE OF BUSINESS

Fall 2001–Spring 2018



COLLEGE OF SCIENCES

Fall 2017

Class Size	N	Median	Cut 1	Cut 2	Cut 3	Cut 4
<16	207	4.83	4.25	4.75	4.89	5.00
16-35	381	4.50	3.75	4.25	4.63	4.81
36-99	84	4.29	3.83	4.13	4.50	4.76
>99	47	4.64	4.20	4.54	4.68	4.77

Spring 2018

Class Size	N	Median	Cut 1	Cut 2	Cut 3	Cut 4
<16	242	4.88	4.25	4.76	4.95	5.00
16-35	308	4.50	3.90	4.33	4.61	4.80
36-99	76	4.64	4.16	4.51	4.72	4.87
>99	36	4.49	4.05	4.45	4.54	4.71

Fall 2001–Spring 2018

Class Size	N	Median	Cut 1	Cut 2	Cut 3	Cut 4
<16	7,436	4.50	4.00	4.25	4.75	5.00
16-35	10,757	4.13	3.50	4.00	4.30	4.67
36-99	2,828	4.13	3.64	4.00	4.29	4.64
>99	1,543	4.10	3.74	4.00	4.21	4.55

COLLEGE OF SCIENCES

Fall 2001–Spring 2018

