

June 28, 2017

Dear Colleague:

The Office of Assessment has processed the 2016-2017 Course/Instructor Opinion Survey (CIOS) results for the Institute. For 71 academic terms (39 quarters and 32 semesters—excluding summer sessions), the Institute has been collecting data and reporting descriptive statistics that provide a basis for interpreting individual ratings.

The original survey was designed in 1986 and consisted of 26 questions, later reduced to 24 by eliminating questions about students' gender and ethnicity. In Fall 2011, a streamlined CIOS was implemented, which was designed by representatives of faculty, students, and administration. This new version reduced the number of core questions from 24 to 10 and eliminated cluster scores. In Summer 2011, representatives of faculty, students, and administration again met to assess the survey and revised it to better reflect the literature on survey design and to improve the quality of feedback for instructors.

The following report focuses on survey Item 10: *Considering everything, the instructor was an effective teacher*. This question has been maintained in the same form throughout all versions of CIOS. To provide the most meaningful comparisons with individual scores, statistics are reported for each term in the academic year and with cumulative results since Fall 2001. This format enables faculty to compare their scores with distributions for specific semesters and for multi-year periods. Central tendencies and distributions of the question are reported by class size category and by college, as well as for the entire Institute. Experience and general research confirm that class size is a primary variable explaining significant differences in ratings. The following notation may help you interpret the report:

- “*N*” is the number of classes in a particular population frame.
- “Median” is the middle value of an ordered array of classes' interpolated median scores.
- Columns “Cut 1,” “Cut 2,” “Cut 3,” and “Cut 4” indicate the quintile values (20th, 40th, 60th, and 80th percentiles) in the distribution. These values are also drawn on the accompanying charts for the cumulative distribution.
- Values range from 1 to 5, where 1 is “strongly disagree” and 5 is “strongly agree.”

We trust that these data are helpful to you. If you have any questions, feel free to contact Dr. Joe Ludlum at 404.385.1292 or <[joe.ludlum@gatech.edu](mailto:joe.ludlum@gatech.edu)>

Joe Ludlum, PhD  
Coordinator of Survey Research  
Office of Assessment  
<[joe.ludlum@gatech.edu](mailto:joe.ludlum@gatech.edu)>

James Shawn Carnley  
Sr. Web Developer  
Office of Assessment  
<[shawn.carnley@gatech.edu](mailto:shawn.carnley@gatech.edu)>

**INSTITUTE-WIDE**

**Fall 2016**

<b>Class Size</b>	<b>N</b>	<b>Median</b>	<b>Cut 1</b>	<b>Cut 2</b>	<b>Cut 3</b>	<b>Cut 4</b>
<16	1388	4.75	4.00	4.50	4.84	5.00
16-35	1334	4.67	4.04	4.50	4.75	4.88
36-99	763	4.53	3.86	4.30	4.65	4.81
>99	120	4.43	4.00	4.30	4.55	4.79

**Spring 2017**

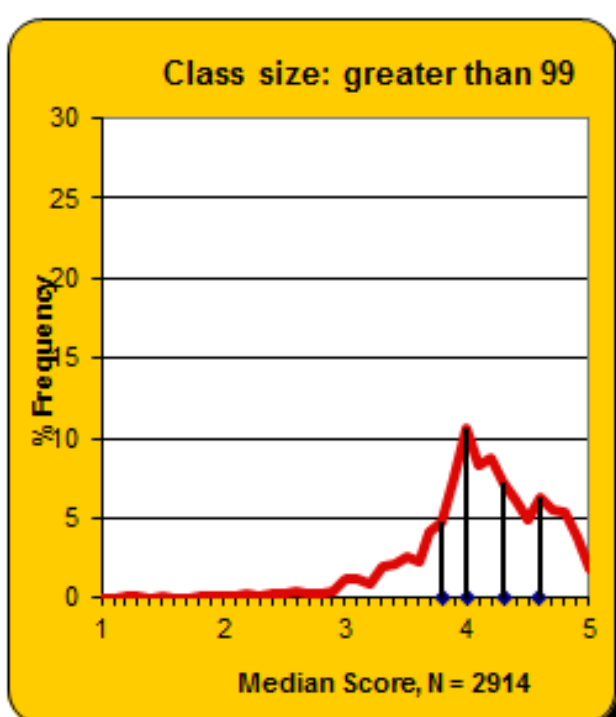
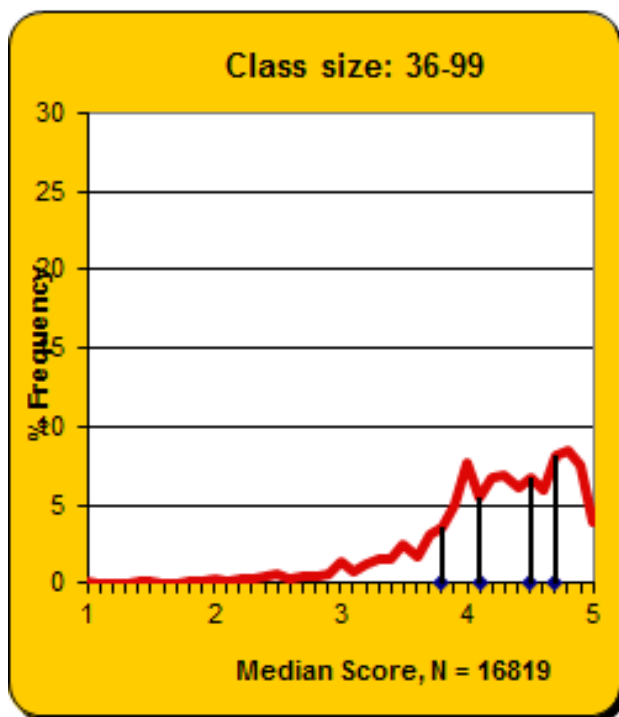
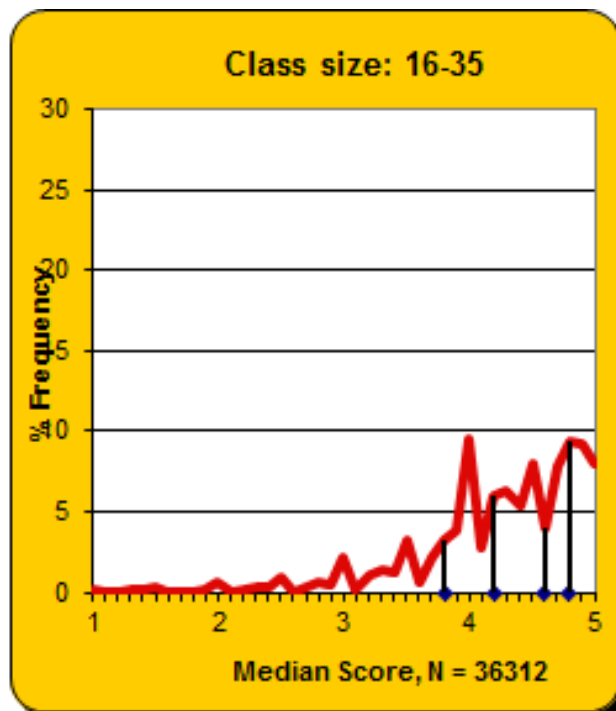
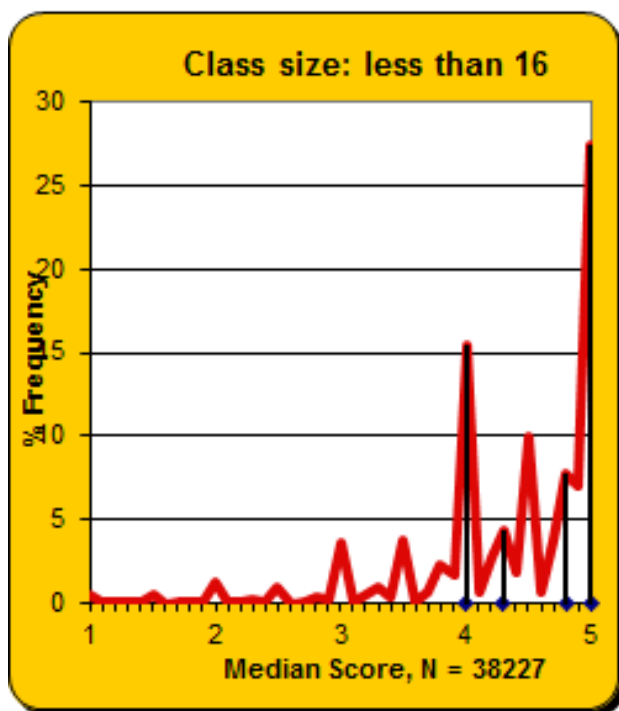
<b>Class Size</b>	<b>N</b>	<b>Median</b>	<b>Cut 1</b>	<b>Cut 2</b>	<b>Cut 3</b>	<b>Cut 4</b>
<16	1375	4.75	4.00	4.67	4.88	5.00
16-35	1222	4.61	4.00	4.42	4.75	4.89
36-99	633	4.50	3.86	4.31	4.67	4.81
>99	101	4.55	4.07	4.33	4.63	4.80

**Fall 2001–Spring 2017**

<b>Class Size</b>	<b>N</b>	<b>Median</b>	<b>Cut 1</b>	<b>Cut 2</b>	<b>Cut 3</b>	<b>Cut 4</b>
<16	38227	4.50	4.00	4.33	4.75	5.00
16-35	36312	4.38	3.83	4.20	4.56	4.80
36-99	16819	4.29	3.79	4.13	4.47	4.73
>99	2914	4.14	3.77	4.02	4.27	4.60

INSTITUTE-WIDE

Fall 2001–Spring 2017



**COLLEGE OF DESIGN**

**Fall 2016**

<b>Class Size</b>	<b>N</b>	<b>Median</b>	<b>Cut 1</b>	<b>Cut 2</b>	<b>Cut 3</b>	<b>Cut 4</b>
<16	155	4.75	4.25	4.65	4.83	5.00
16-35	91	4.67	4.30	4.58	4.75	4.87
36-99	19	4.82	4.50	4.76	4.88	4.95
>99	5	4.94	3.93	4.41	4.96	4.98

**Spring 2017**

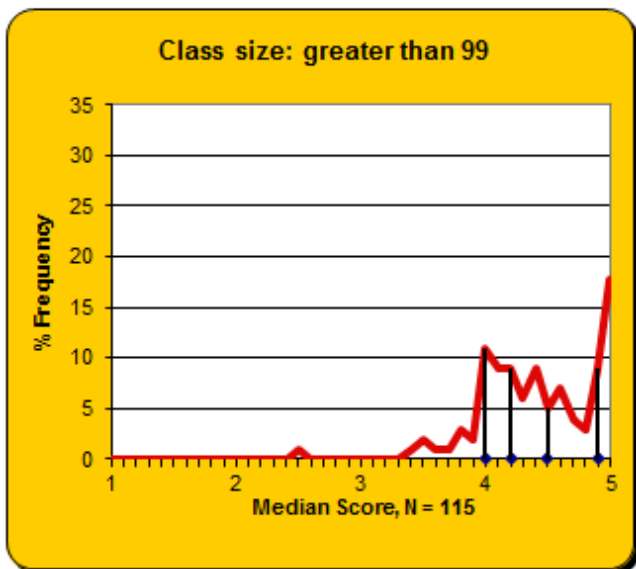
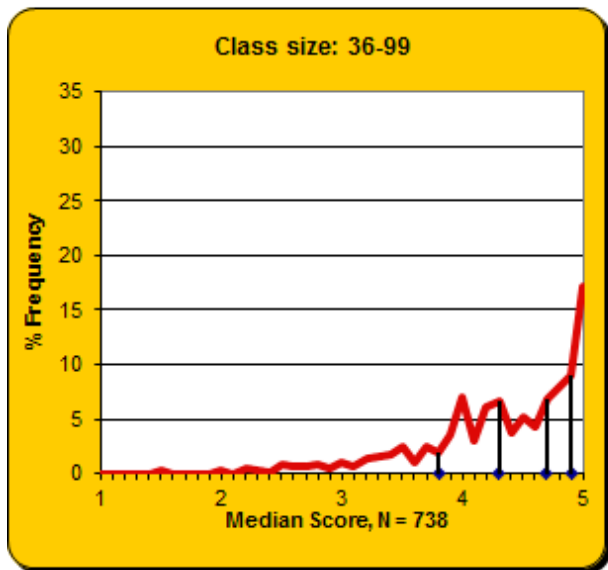
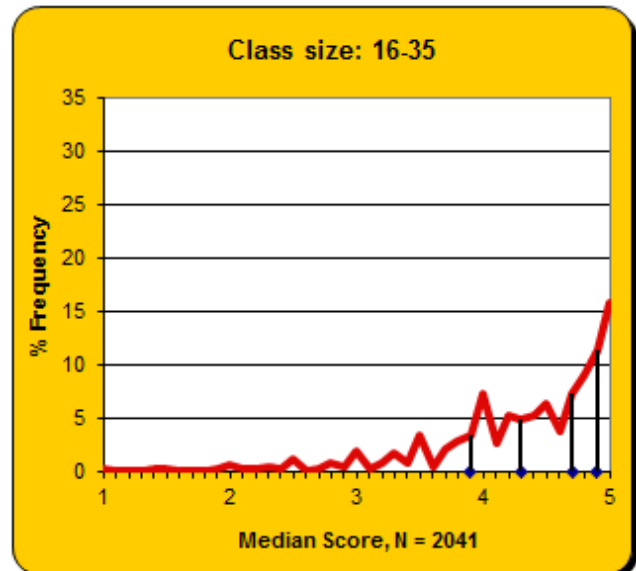
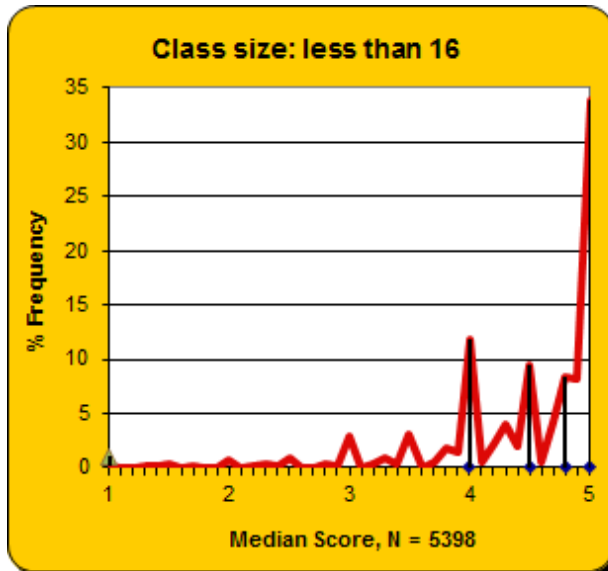
<b>Class Size</b>	<b>N</b>	<b>Median</b>	<b>Cut 1</b>	<b>Cut 2</b>	<b>Cut 3</b>	<b>Cut 4</b>
<16	158	4.83	4.00	4.75	4.88	5.00
16-35	59	4.73	4.25	4.64	4.80	4.92
36-99	19	4.73	3.94	4.67	4.85	4.97
>99	2	4.37	4.31	4.33	4.40	4.42

**Fall 2001–Spring 2017**

<b>Class Size</b>	<b>N</b>	<b>Median</b>	<b>Cut 1</b>	<b>Cut 2</b>	<b>Cut 3</b>	<b>Cut 4</b>
<16	5398	4.75	4.00	4.50	4.83	5.00
16-35	2041	4.50	3.90	4.33	4.69	4.88
36-99	738	4.50	3.85	4.26	4.67	4.90
>99	115	4.37	4.00	4.25	4.55	4.91

## COLLEGE OF DESIGN

Fall 2001–Spring 2017



## COLLEGE OF COMPUTING

### Fall 2016

Class Size	<i>N</i>	Median	Cut 1	Cut 2	Cut 3	Cut 4
<16	72	4.50	4.00	4.50	4.75	5.00
16-35	71	4.61	4.08	4.41	4.67	4.77
36-99	121	4.32	3.59	4.05	4.52	4.78
>99	33	4.54	4.20	4.37	4.66	4.79

### Spring 2017

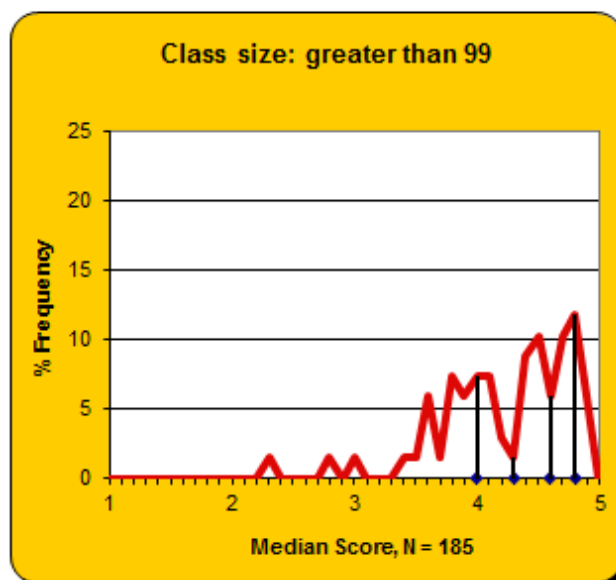
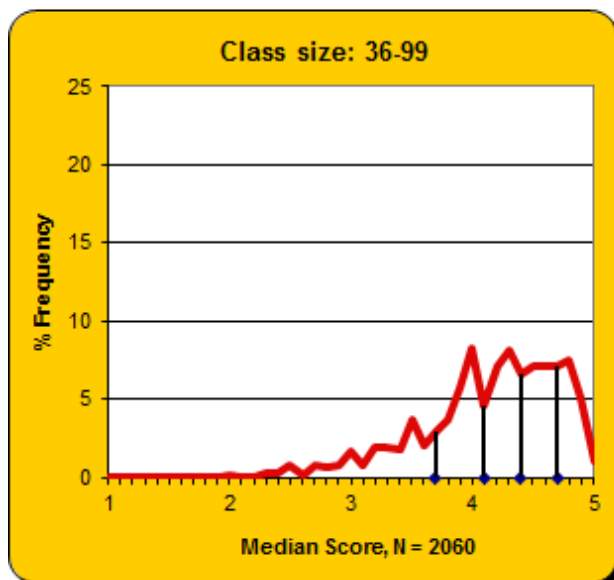
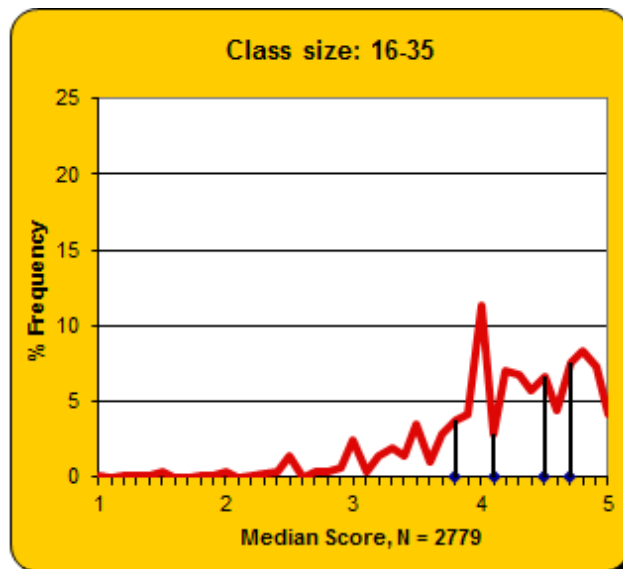
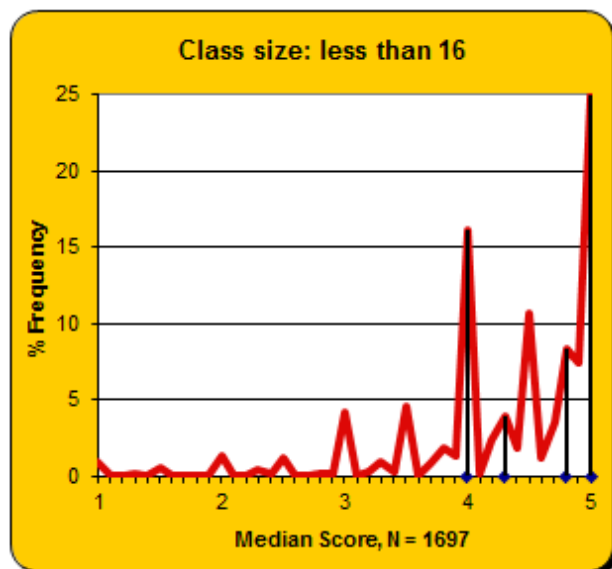
Class Size	<i>N</i>	Median	Cut 1	Cut 2	Cut 3	Cut 4
<16	39	4.75	4.00	4.64	4.83	5.00
16-35	53	4.67	4.31	4.56	4.75	4.83
36-99	126	4.44	3.79	4.24	4.65	4.80
>99	35	4.59	4.16	4.54	4.67	4.82

### Fall 2001–Spring 2017

Class Size	<i>N</i>	Median	Cut 1	Cut 2	Cut 3	Cut 4
<16	1697	4.50	4.00	4.30	4.75	5.00
16-35	2779	4.25	3.75	4.12	4.50	4.73
36-99	2060	4.24	3.69	4.08	4.38	4.67
>99	185	4.50	4.00	4.34	4.57	4.76

## COLLEGE OF COMPUTING

Fall 2001–Spring 2017



**COLLEGE OF ENGINEERING**

**Fall 2016**

<b>Class Size</b>	<b>N</b>	<b>Median</b>	<b>Cut 1</b>	<b>Cut 2</b>	<b>Cut 3</b>	<b>Cut 4</b>
<16	486	4.50	4.00	4.32	4.75	5.00
16-35	354	4.58	4.00	4.38	4.71	4.86
36-99	355	4.43	3.81	4.25	4.60	4.80
>99	21	4.39	3.75	3.99	4.51	4.72

**Spring 2017**

<b>Class Size</b>	<b>N</b>	<b>Median</b>	<b>Cut 1</b>	<b>Cut 2</b>	<b>Cut 3</b>	<b>Cut 4</b>
<16	575	4.67	4.00	4.50	4.75	5.00
16-35	444	4.50	3.75	4.25	4.63	4.85
36-99	302	4.44	3.79	4.23	4.59	4.79
>99	19	4.63	3.85	4.55	4.70	4.85

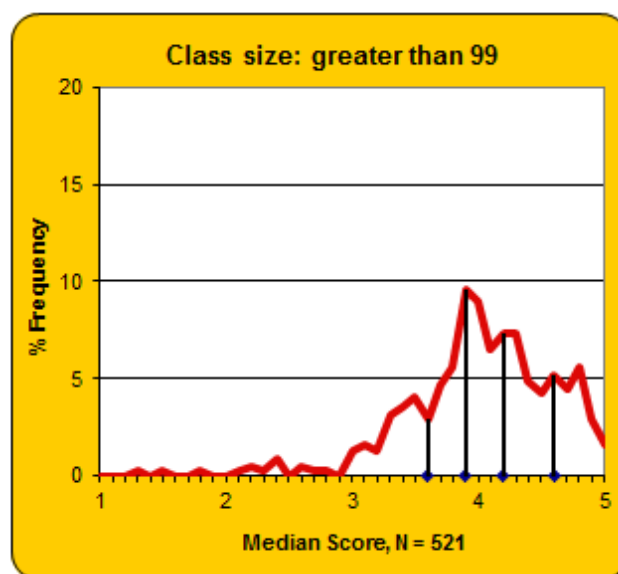
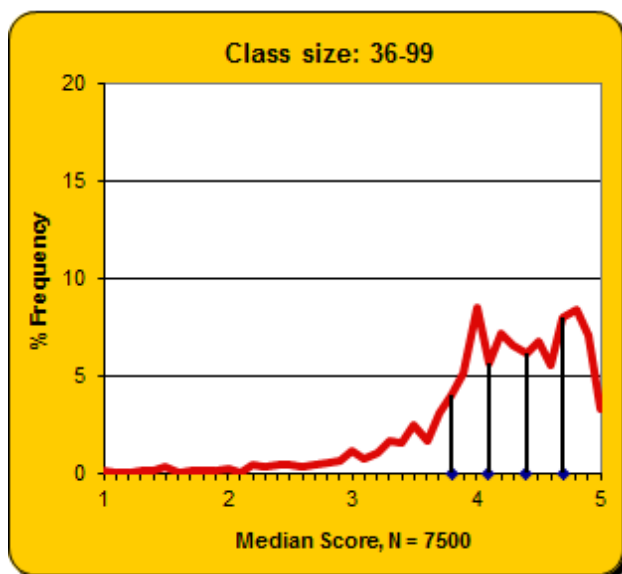
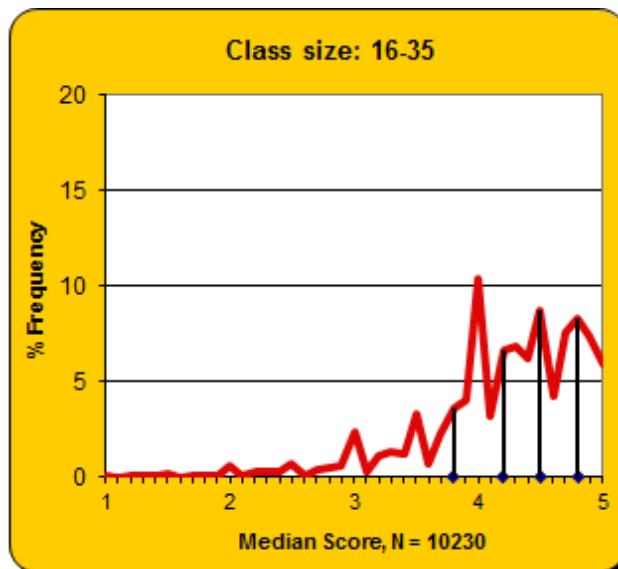
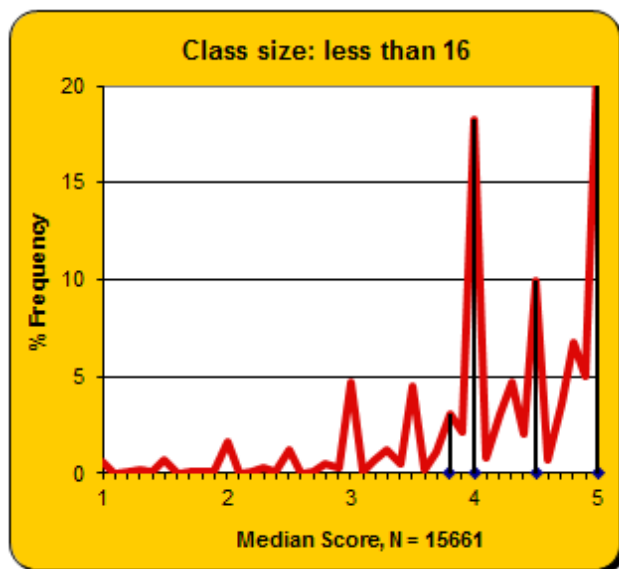
**Fall 2001–Spring 2017**

<b>Class Size</b>	<b>N</b>	<b>Median</b>	<b>Cut 1</b>	<b>Cut 2</b>	<b>Cut 3</b>	<b>Cut 4</b>
<16	15661	4.33	3.75	4.00	4.50	5.00
16-35	10230	4.30	3.80	4.17	4.50	4.75
36-99	7500	4.25	3.77	4.11	4.43	4.71
>99	521	4.06	3.60	3.91	4.20	4.56



## COLLEGE OF ENGINEERING

Fall 2001–Spring 2017



**IVAN ALLEN COLLEGE**

**Fall 2016**

<b>Class Size</b>	<b>N</b>	<b>Median</b>	<b>Cut 1</b>	<b>Cut 2</b>	<b>Cut 3</b>	<b>Cut 4</b>
<16	229	4.83	4.50	4.75	4.90	5.00
16-35	276	4.78	4.50	4.75	4.83	4.94
36-99	36	4.58	4.12	4.50	4.69	4.85
>99	16	4.39	3.57	4.24	4.56	4.83

**Spring 2017**

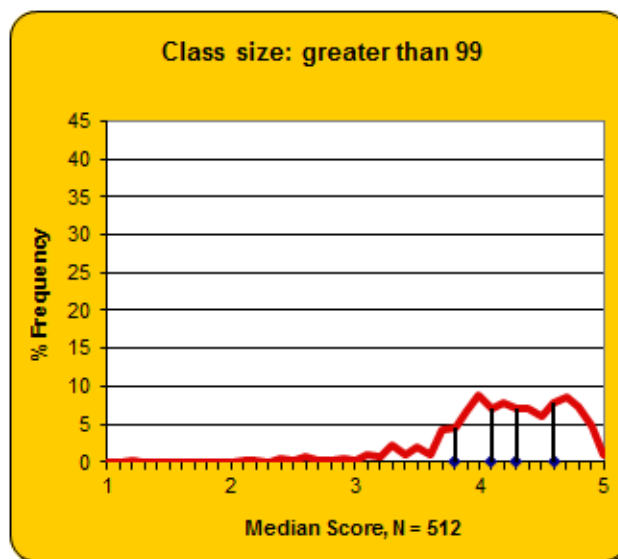
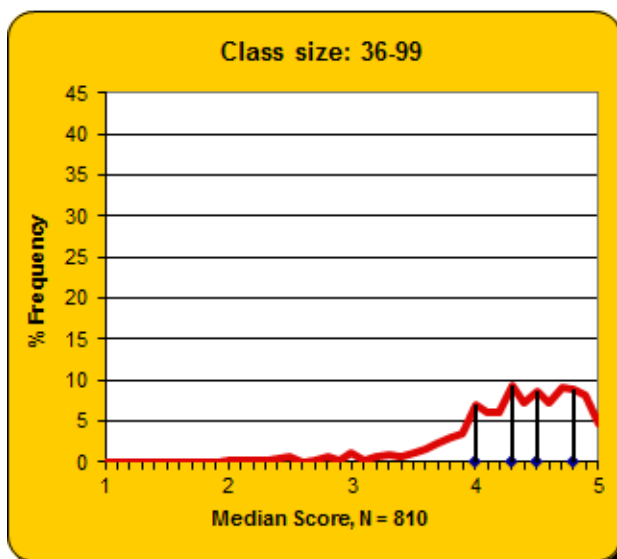
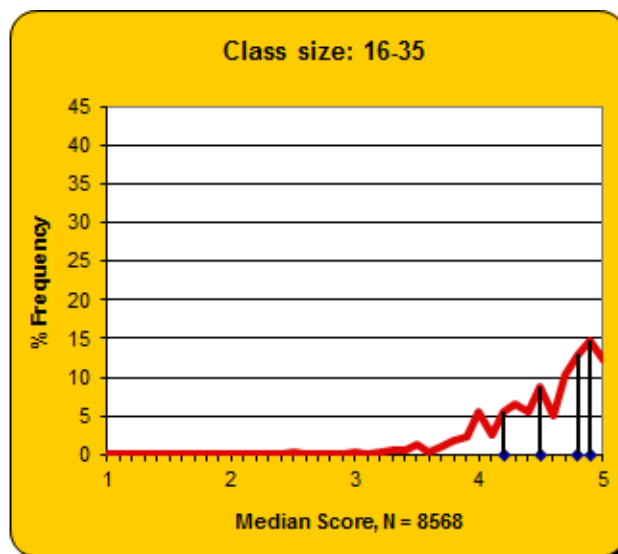
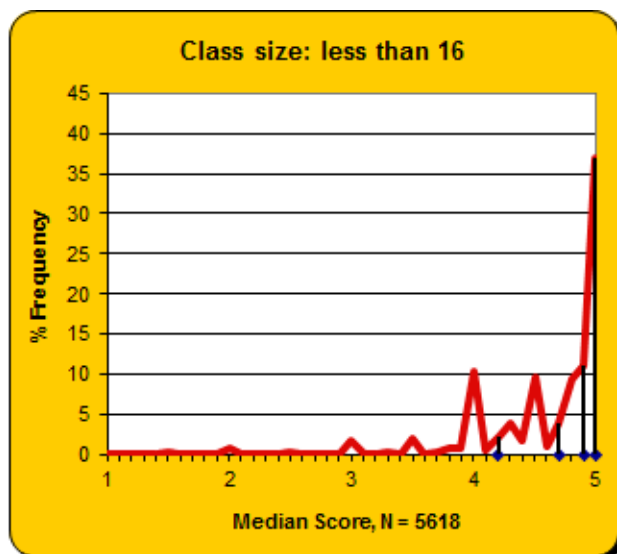
<b>Class Size</b>	<b>N</b>	<b>Median</b>	<b>Cut 1</b>	<b>Cut 2</b>	<b>Cut 3</b>	<b>Cut 4</b>
<16	231	4.88	4.50	4.81	4.93	5.00
16-35	264	4.79	4.42	4.75	4.86	4.95
36-99	39	4.56	4.02	4.50	4.68	4.85
>99	6	4.42	3.98	4.31	4.54	4.78

**Fall 2001–Spring 2017**

<b>Class Size</b>	<b>N</b>	<b>Median</b>	<b>Cut 1</b>	<b>Cut 2</b>	<b>Cut 3</b>	<b>Cut 4</b>
<16	5618	4.80	4.17	4.70	4.90	5.00
16-35	8568	4.64	4.17	4.50	4.75	4.88
36-99	810	4.41	3.98	4.26	4.55	4.75
>99	512	4.21	3.80	4.07	4.35	4.64

## IVAN ALLEN COLLEGE

Fall 2001–Spring 2017



**SCHELLER COLLEGE OF BUSINESS**

**Fall 2016**

<b>Class Size</b>	<b>N</b>	<b>Median</b>	<b>Cut 1</b>	<b>Cut 2</b>	<b>Cut 3</b>	<b>Cut 4</b>
<16	106	4.79	4.00	4.64	4.92	5.00
16-35	64	4.80	4.25	4.75	4.86	4.94
36-99	135	4.74	4.13	4.64	4.79	4.88
>99	0	NA	NA	NA	NA	NA

**Spring 2017**

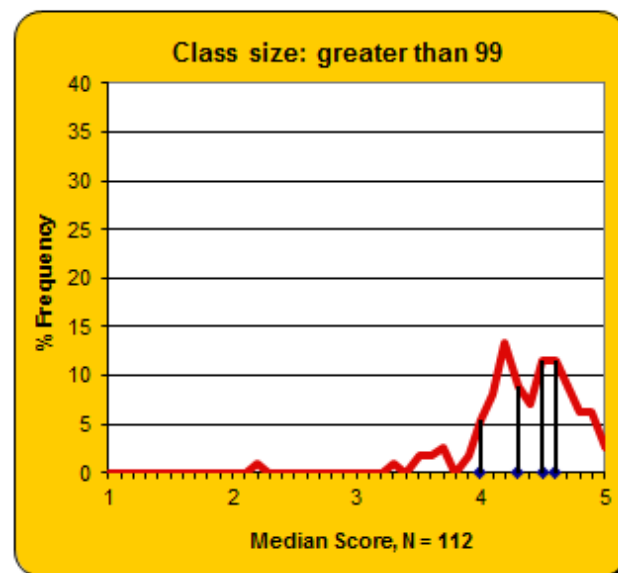
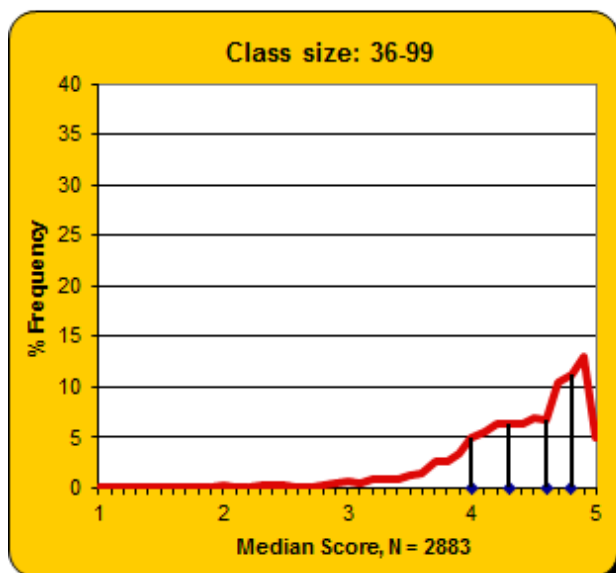
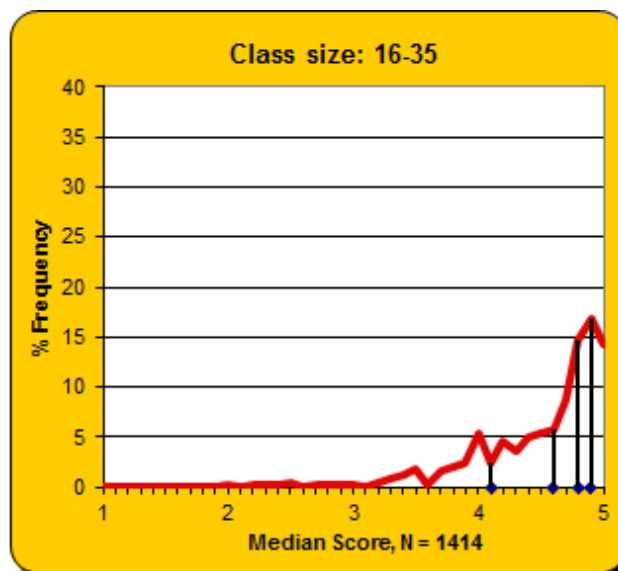
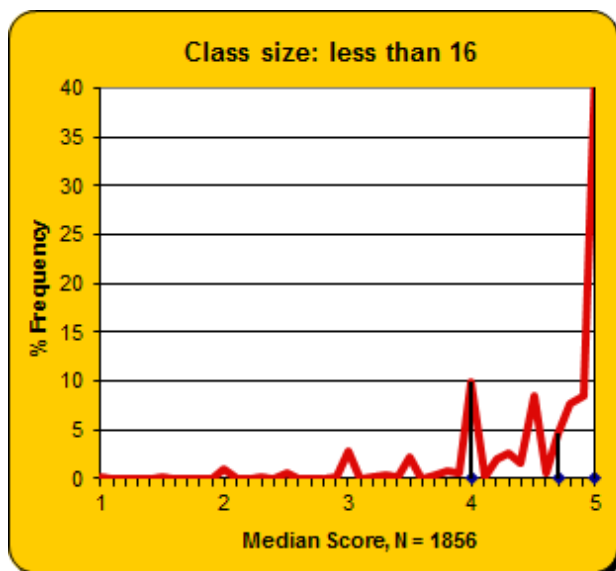
<b>Class Size</b>	<b>N</b>	<b>Median</b>	<b>Cut 1</b>	<b>Cut 2</b>	<b>Cut 3</b>	<b>Cut 4</b>
<16	103	4.88	4.14	4.75	5.00	5.00
16-35	89	4.65	4.00	4.44	4.81	4.92
36-99	90	4.68	4.13	4.55	4.80	4.89
>99	0	NA	NA	NA	NA	NA

**Fall 2001–Spring 2017**

<b>Class Size</b>	<b>N</b>	<b>Median</b>	<b>Cut 1</b>	<b>Cut 2</b>	<b>Cut 3</b>	<b>Cut 4</b>
<16	1856	4.83	4.00	4.71	5.00	5.00
16-35	1414	4.69	4.10	4.57	4.77	4.89
36-99	2883	4.50	4.00	4.33	4.63	4.81
>99	112	4.34	4.05	4.26	4.48	4.63

## SCHELLER COLLEGE OF BUSINESS

Fall 2001–Spring 2017



**COLLEGE OF SCIENCES**

**Fall 2016**

<b>Class Size</b>	<b>N</b>	<b>Median</b>	<b>Cut 1</b>	<b>Cut 2</b>	<b>Cut 3</b>	<b>Cut 4</b>
<16	249	4.79	4.17	4.67	4.89	5.00
16-35	374	4.45	3.88	4.23	4.56	4.75
36-99	82	4.33	3.65	4.13	4.55	4.69
>99	45	4.43	4.10	4.26	4.53	4.70

**Spring 2017**

<b>Class Size</b>	<b>N</b>	<b>Median</b>	<b>Cut 1</b>	<b>Cut 2</b>	<b>Cut 3</b>	<b>Cut 4</b>
<16	230	4.83	4.25	4.72	4.91	5.00
16-35	295	4.38	3.67	4.20	4.59	4.83
36-99	56	4.51	3.92	4.37	4.59	4.76
>99	38	4.26	4.04	4.16	4.53	4.77

**Fall 2001–Spring 2017**

<b>Class Size</b>	<b>N</b>	<b>Median</b>	<b>Cut 1</b>	<b>Cut 2</b>	<b>Cut 3</b>	<b>Cut 4</b>
<16	6987	4.50	4.00	4.25	4.75	5.00
16-35	10068	4.11	3.50	4.00	4.25	4.67
36-99	2668	4.11	3.62	4.00	4.27	4.63
>99	1460	4.09	3.73	3.99	4.19	4.51

**COLLEGE OF SCIENCES**

**Fall 2001–Spring 2017**

