



Center for the Enhancement of Teaching and Learning  
Atlanta, Georgia 30332-0383 USA  
TEL 404-894-4474  
FAX 404-894-4475

August 17, 2001

Dear Colleague:

As you know, CETL processes the Course/Instructor Opinion Survey (CIOS) results for the Institute. For 43 academic terms (39 quarters and 4 semesters—excluding summer sessions), we have been collecting data and updating the normative scores that provide a basis for interpreting individual ratings (categorized by class size since according to our experience and the general research, class size is the primary variable involved in significant differences in evaluation scores). Institute-wide normative data (for 1986-2001 and for 2000-2001) and normative data for each of the six colleges (for 1986-2001) are attached. The following explains how these results were obtained from the survey data and provides a key to interpreting the attached reports.

The survey results are divided into four topics for analysis. One item (item #24--“The instructor was an effective teacher”) and the three “clusters” are used to characterize responses:

- Cluster 1 (C1): Preparation and Presentation of Course (Items 10, 11, 13, 15, and 18)
- Cluster 2 (C2): Interaction with Students (Items 14, 19, 20, 21, 22)
- Cluster 3 (C3): Assessment of Student Performance (Items 12, 16, 17, 23)

For item #24, we generate the frequency distributions of normative data based on the *median* scores for this one question. For each of the clusters, first the *mean* of the four (C3) or five (C1 and C2) median scores for each item within a cluster are calculated; these means are then used to generate a normed curve. Frequency distributions of these means (or medians in the case of item #24) for all classes in that particular class size category are then used to generate “quintiles” (20th, 40th, 60th, 80th percentiles).

The reports entitled “ILLUSTRATION OF STABILITY OF NORM DATA” indicate the continuing stability of the survey data by showing how the cumulative data changes by adding in the most recent term.

The following notation will help you interpret the attached reports:

- “N” is the number of classes in a particular class size sample.
- The columns “Cut 1, Cut 2, Cut 3, and Cut 4” indicate where the lines that separate the quintiles on the accompanying curves are drawn.
- The survey responses range from 1 to 5 ( 1 – Strongly disagree; 2 – Disagree; 3 – Partially agree and partially disagree; 4 – Agree; 5 – Strongly agree).

I trust that these data are helpful to you. If you have any questions, feel free to contact me at [billiee.pendletonparker@oars.gatech.edu](mailto:billiee.pendletonparker@oars.gatech.edu) or 4-8898.

Sincerely,

Billiee Pendleton-Parker  
Assistant Director, CETL  
CIOS Coordinator

---

---

# Ivan Allen College 1986-2001

**NORMATIVE DATA FOR THE C.I.O.S.  
(COURSE / INSTRUCTOR OPINION SURVEY)**



## Illustration of Stability of Norm Data for the Ivan Allen College 1986-2001

Class Size: Less than 16

Data	Item	N	Median	Cut1	Cut 2	Cut 3	Cut 4
42 Terms	24	1650	4.54	4.08	4.38	4.67	4.83
43 Terms	24	1663	4.54	4.09	4.38	4.67	4.83
42 Terms	C1	1650	4.36	4.01	4.24	4.47	4.67
43 Terms	C1	1663	4.37	4.02	4.24	4.47	4.66
42 Terms	C2	1650	4.54	4.19	4.43	4.62	4.80
43 Terms	C2	1663	4.54	4.20	4.43	4.62	4.80
42 Terms	C3	1650	4.29	4.00	4.18	4.39	4.64
43 Terms	C3	1663	4.29	4.00	4.18	4.39	4.64

Class Size: 16-35

Data	Item	N	Median	Cut1	Cut 2	Cut 3	Cut 4
42 Terms	24	4834	4.40	4.00	4.27	4.55	4.74
43 Terms	24	4966	4.40	4.00	4.27	4.54	4.74
42 Terms	C1	4834	4.24	3.94	4.15	4.32	4.52
43 Terms	C1	4966	4.24	3.94	4.15	4.33	4.52
42 Terms	C2	4834	4.41	4.10	4.32	4.49	4.67
43 Terms	C2	4966	4.42	4.11	4.32	4.49	4.68
42 Terms	C3	4834	4.20	3.95	4.12	4.27	4.49
43 Terms	C3	4966	4.20	3.95	4.12	4.27	4.49

# Illustration of Stability of Norm Data for the Ivan Allen College 1986-2001

Class Size: 36-99

Data	Item	N	Median	Cut1	Cut 2	Cut 3	Cut 4
42 Terms	24	3532	4.27	3.89	4.15	4.38	4.65
43 Terms	24	3597	4.27	3.89	4.15	4.37	4.65
42 Terms	C1	3532	4.14	3.83	4.05	4.22	4.41
43 Terms	C1	3597	4.14	3.83	4.05	4.22	4.41
42 Terms	C2	3532	4.29	3.98	4.19	4.37	4.57
43 Terms	C2	3597	4.29	3.98	4.19	4.37	4.57
42 Terms	C3	3532	4.09	3.82	4.01	4.15	4.33
43 Terms	C3	3597	4.08	3.82	4.01	4.15	4.33

Class Size: Greater than 99

Data	Item	N	Median	Cut1	Cut 2	Cut 3	Cut 4
42 Terms	24	597	4.15	3.77	4.03	4.24	4.52
43 Terms	24	616	4.15	3.77	4.03	4.24	4.51
42 Terms	C1	597	4.08	3.73	3.97	4.17	4.36
43 Terms	C1	616	4.08	3.74	3.97	4.17	4.36
42 Terms	C2	597	4.08	3.74	4.00	4.13	4.36
43 Terms	C2	616	4.08	3.75	4.01	4.13	4.35
42 Terms	C3	597	4.03	3.76	3.97	4.08	4.23
43 Terms	C3	616	4.03	3.75	3.97	4.08	4.23

## LEGEND

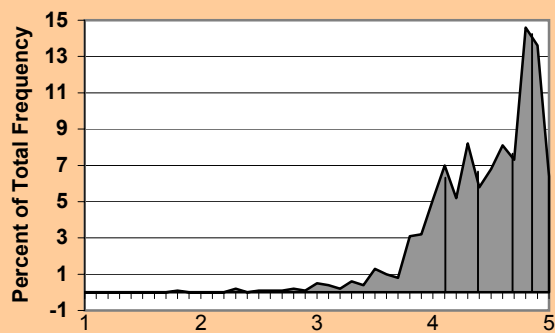
C1 is Preparation & Presentation = Items 10, 11, 13, 15, 18  
 C2 is Interaction with Students = Items 14, 19, 20, 21, 22  
 C3 is Assessment of Student Performance = Items 12, 16, 17, 23  
 Item 24 = The instructor was an effective teacher.

*Note: In the "Data" column, "Terms" refers to quarters for every term previous to Fall 1999 and to semesters for every term starting with Fall 1999.*

# Norm Data for the Ivan Allen College 1986-2001

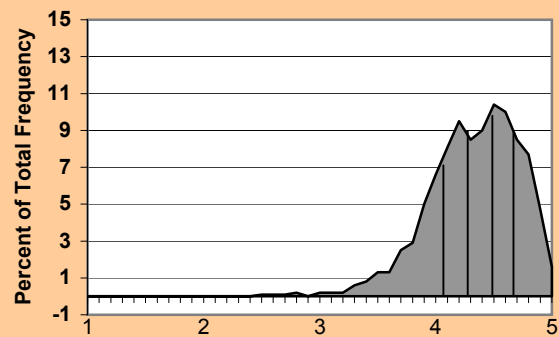
## CLASS SIZE: LESS THAN 16

**Instructor was an Effective Teacher**



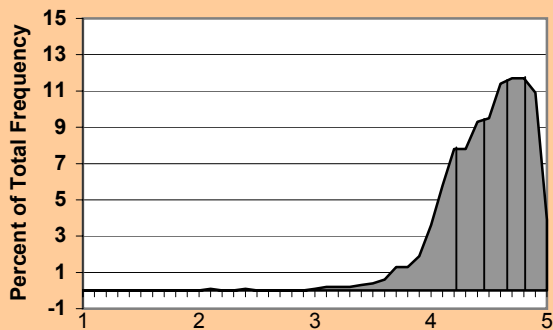
Median Score  
N = 1663  
Item 24

**Preparation and Presentation of Course**



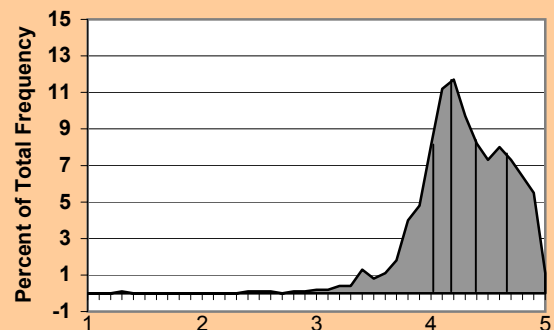
Mean Score  
N = 1663  
Cluster #1

**Interaction With Students**



Mean Score  
N = 1663  
Cluster #2

**Assessment of Student Performance**

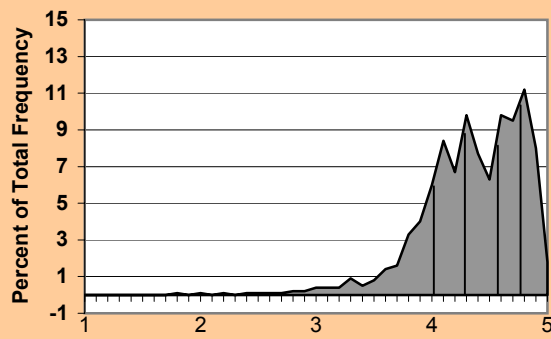


Mean Score  
N = 1663  
Cluster #3

# Norm Data for the Ivan Allen College 1986-2001

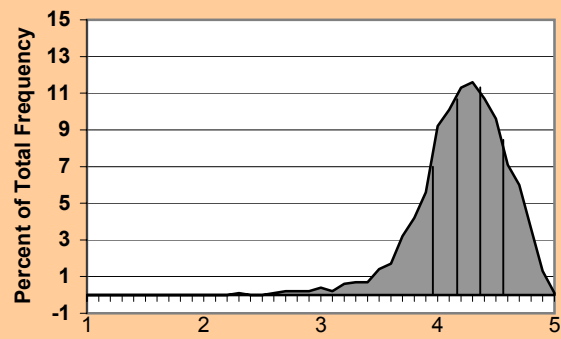
## CLASS SIZE: 16 - 35

**Instructor was an Effective Teacher**



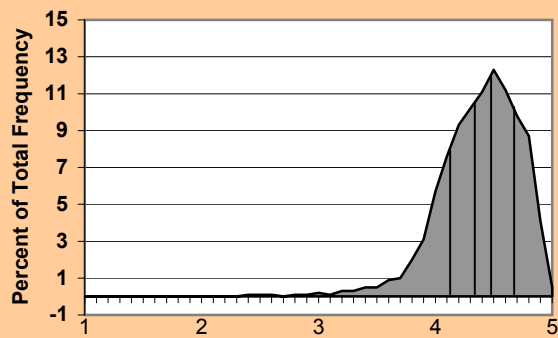
Median Score  
N = 4966  
Item 24

**Preparation and Presentation of Course**



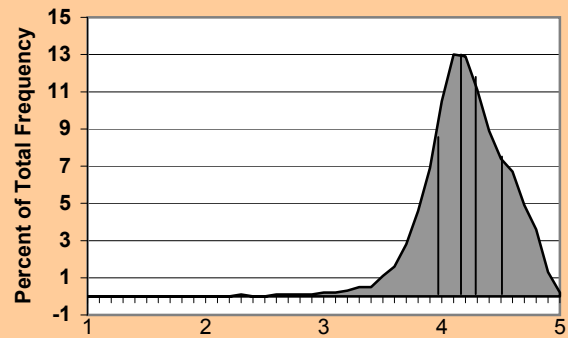
Mean Score  
N = 4966  
Cluster #1

**Interaction With Students**



Mean Score  
N = 4966  
Cluster #2

**Assessment of Student Performance**

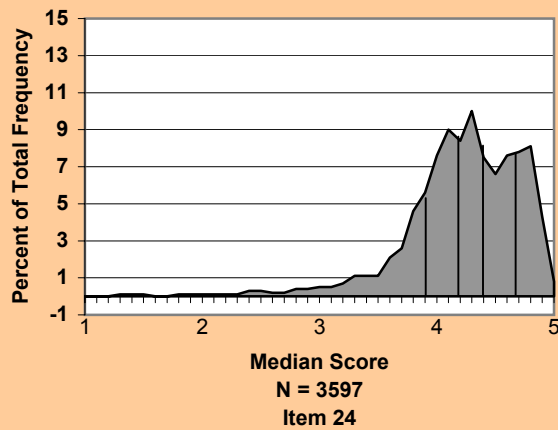


Mean Score  
N = 4966  
Cluster #3

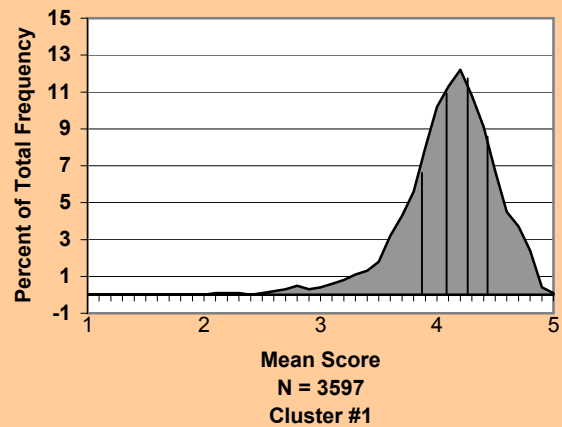
# Norm Data for the Ivan Allen College 1986-2001

## CLASS SIZE: 36 - 99

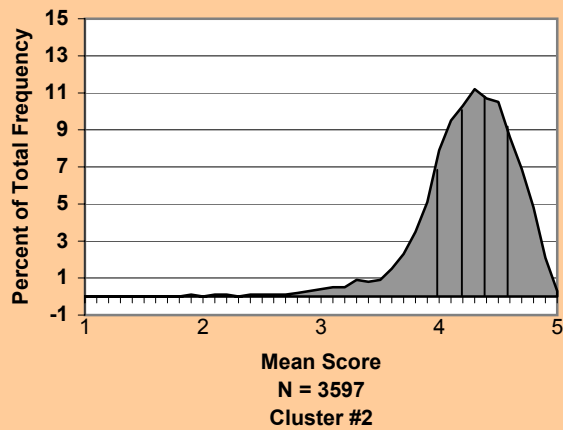
**Instructor was an Effective Teacher**



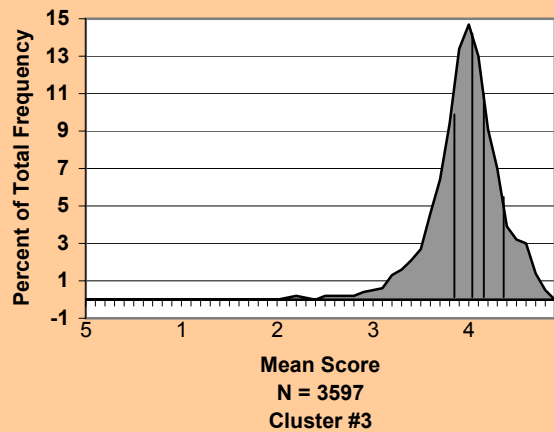
**Preparation and Presentation of Course**



**Interaction With Students**



**Assessment of Student Performance**

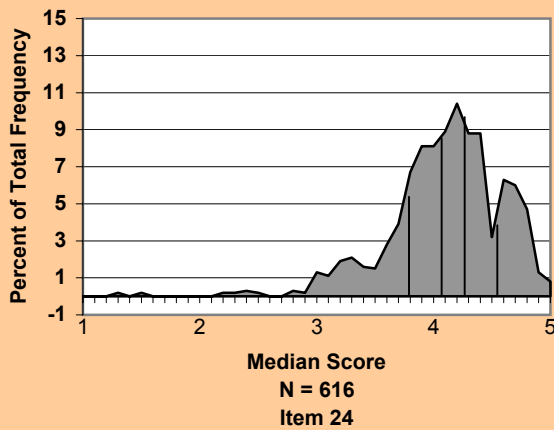


# Norm Data for the Ivan Allen College 1986-2001

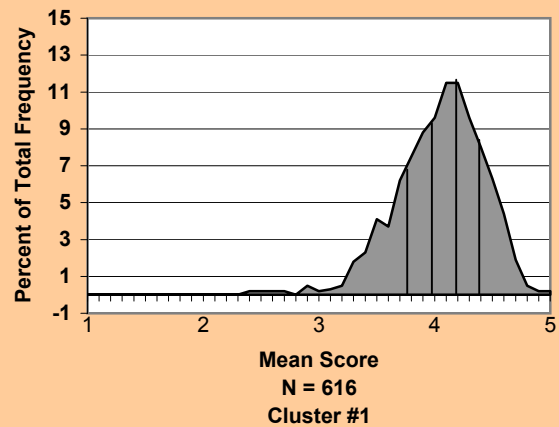
Center for the  
enhancement of  
teaching &  
learning

## CLASS SIZE: Greater than 99

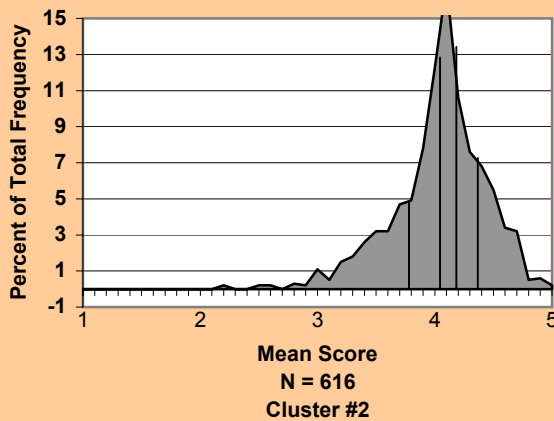
Instructor was an Effective Teacher



Preparation and Presentation of Course



Interaction With Students



Assessment of Student Performance

