



Center for the Enhancement of Teaching and Learning  
Atlanta, Georgia 30332-0383 USA  
TEL 404-894-4474  
FAX 404-894-4475

June 8, 2010

Dear Colleague:

As you know, CETL processes the Course/Instructor Opinion Survey (CIOS) results for the Institute. For 57 academic terms (39 quarters and 18 semesters—excluding summer sessions), we have been collecting data and reporting descriptive statistics that provide a basis for interpreting individual ratings (categorized by class size because our experience and the general research confirm that class size is a primary variable explaining significant differences in evaluation scores).

Beginning in the Fall 2001 semester, a new streamlined CIOS was implemented. The new survey—designed by representatives of faculty, students, and administration—reduced the number of core questions from 24 to 10 and eliminated cluster scores. The following report focuses on question 10, “The instructor was an effective teacher” (formerly question 24). To provide the most meaningful comparisons with individual scores, we report statistics on question 10 for each term in the academic year and cumulative results since Fall 2001. This allows faculty to compare their scores with distributions for the specific semesters and for multi-year periods. Central tendencies and distributions of the question are reported by class size category and by college, as well as for the entire Institute. The following notation will help you interpret the report:

- “N” is the number of classes in a particular population frame.
- “Median” is the middle value of an ordered array of classes’ interpolated median scores.
- The columns “Cut 1,” “Cut 2,” “Cut 3,” and “Cut 4” indicate the quintile values (20<sup>th</sup>, 40<sup>th</sup>, 60<sup>th</sup>, and 80<sup>th</sup> percentiles) in the distribution. These values are also drawn on the accompanying charts for the cumulative distribution.
- The values range from 1 to 5, where 1 is “strongly disagree” and 5 is “strongly agree”.

We trust that these data are helpful to you. If you have any questions, feel free to contact CETL at 4-4474.

Sincerely,

Donna Llewellyn, PhD  
CETL Director  
donna.llewellyn@cetl.gatech.edu

Tristan T. Utschig, PhD  
CETL Assistant Director  
Scholarship and Assessment of Teaching and Learning  
tris.utschig@cetl.gatech.edu

**INSTITUTE-WIDE**

**Fall 2009**

Class Size	N	Median	Cut1	Cut 2	Cut 3	Cut 4
< 16	1168	4.50	4.00	4.25	4.75	5.00
16 – 35	1299	4.33	3.88	4.20	4.50	4.75
36 – 99	543	4.33	3.88	4.23	4.50	4.75
> 99	102	4.16	3.83	4.09	4.26	4.57

**Spring 2010**

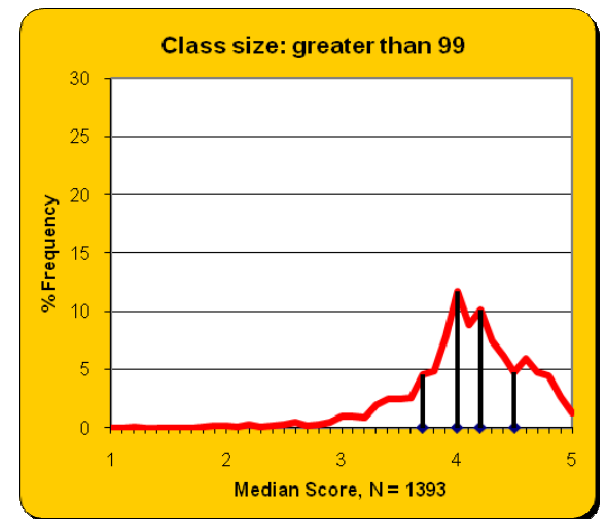
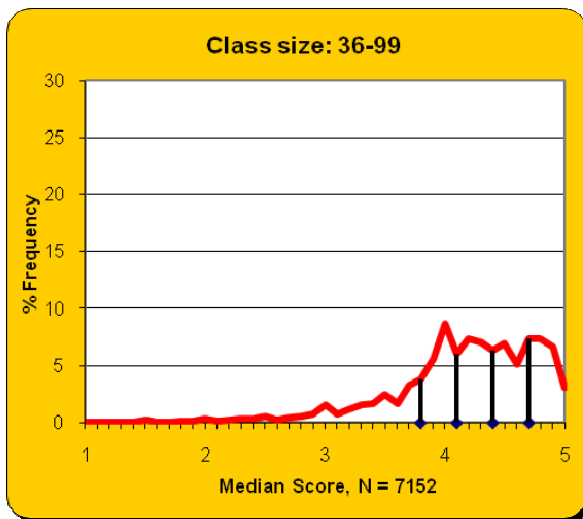
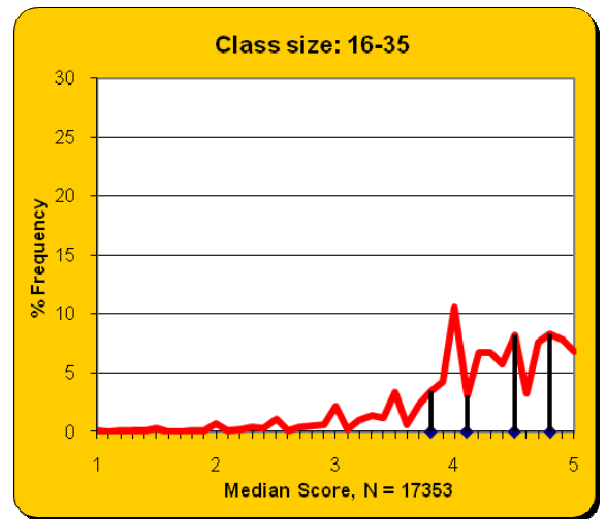
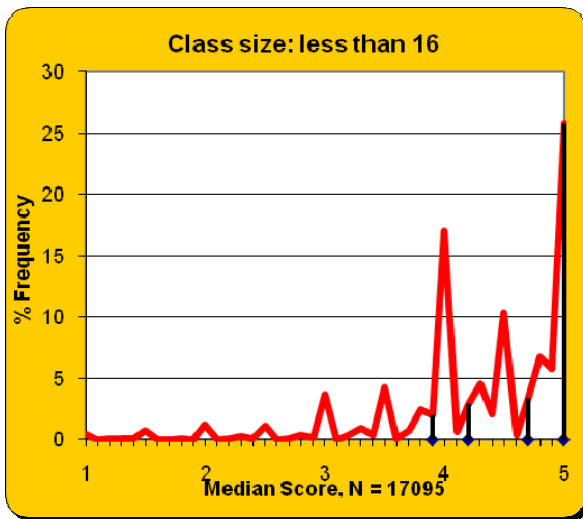
Class Size	N	Median	Cut1	Cut 2	Cut 3	Cut 4
< 16	1411	4.50	4.00	4.33	4.75	5.00
16 – 35	1109	4.33	3.88	4.25	4.50	4.78
36 – 99	493	4.35	3.83	4.19	4.50	4.73
> 99	95	4.17	3.90	4.08	4.26	4.60

**Fall 2001 – Spring 2010**

Class Size	N	Median	Cut1	Cut 2	Cut 3	Cut 4
< 16	19674	4.50	3.90	4.17	4.67	5.00
16 – 35	19761	4.25	3.75	4.13	4.50	4.75
36 – 99	8188	4.20	3.75	4.07	4.35	4.67
> 99	1590	4.08	3.73	3.98	4.18	4.48

**INSTITUTE-WIDE**

**Fall 2001 – Spring 2010**



## COLLEGE OF ARCHITECTURE

### Fall 2009

Class Size	N	Median	Cut1	Cut 2	Cut 3	Cut 4
< 16	173	4.50	4.00	4.25	4.75	5.00
16 – 35	63	4.50	4.00	4.39	4.74	4.94
36 – 99	34	4.21	3.67	4.10	4.32	4.79
> 99	5	4.90	4.42	4.73	4.91	4.95

### Spring 2010

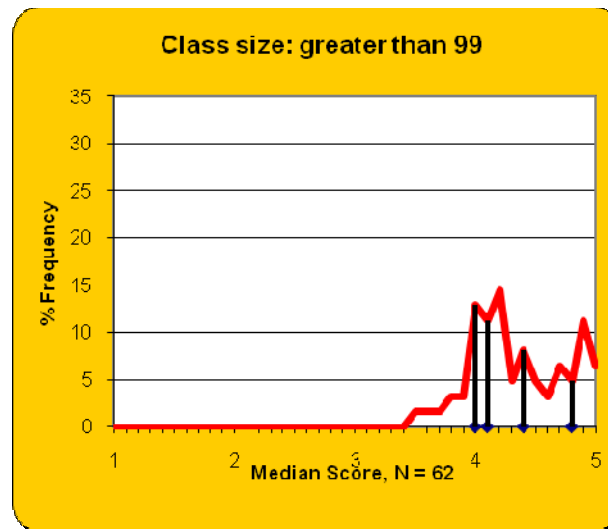
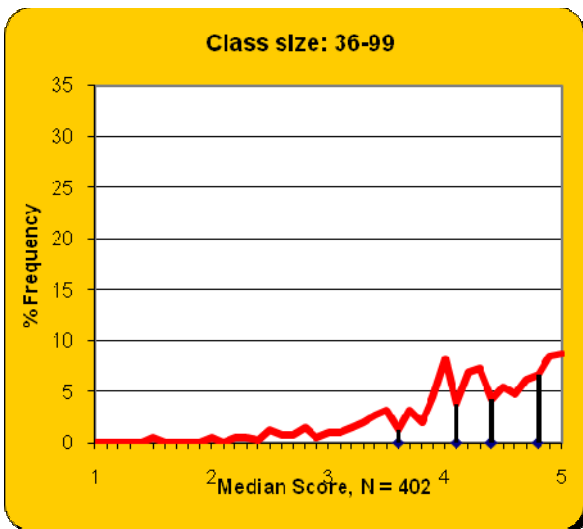
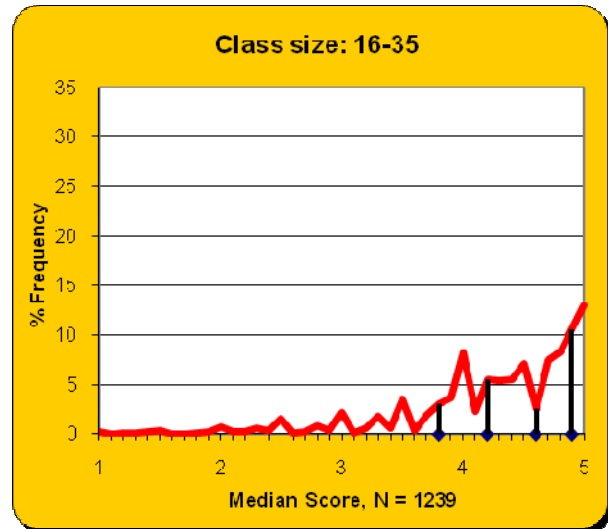
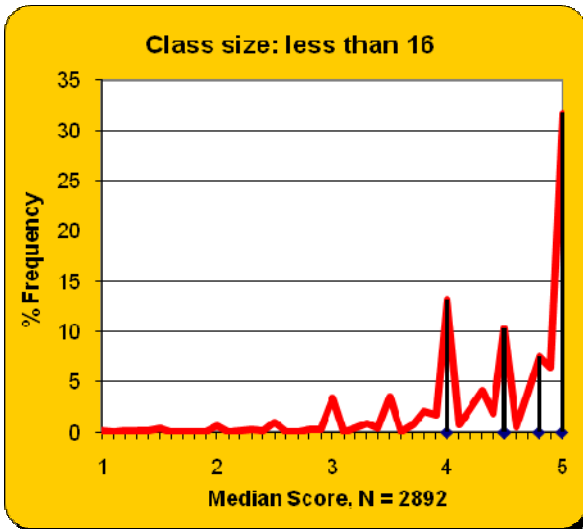
Class Size	N	Median	Cut1	Cut 2	Cut 3	Cut 4
< 16	203	4.70	4.00	4.50	4.81	5.00
16 – 35	69	4.63	4.00	4.50	4.75	4.89
36 – 99	34	4.29	2.80	3.56	4.63	4.88
> 99	2	4.40	4.16	4.26	4.54	4.64

### Fall 2001 – Spring 2010

Class Size	N	Median	Cut1	Cut 2	Cut 3	Cut 4
< 16	2892	4.50	4.00	4.50	4.75	5.00
16 – 35	1239	4.38	3.79	4.20	4.60	4.85
36 – 99	402	4.25	3.63	4.08	4.41	4.76
> 99	62	4.23	3.99	4.12	4.37	4.78

COLLEGE OF ARCHITECTURE

Fall 2001 – Spring 2010



## COLLEGE OF COMPUTING

### Fall 2009

Class Size	N	Median	Cut1	Cut 2	Cut 3	Cut 4
< 16	50	4.50	4.00	4.50	4.72	4.98
16 – 35	95	4.08	3.50	4.00	4.21	4.67
36 – 99	56	4.29	3.83	4.19	4.39	4.66
> 99	1	4.09	4.09	4.09	4.09	4.09

### Spring 2010

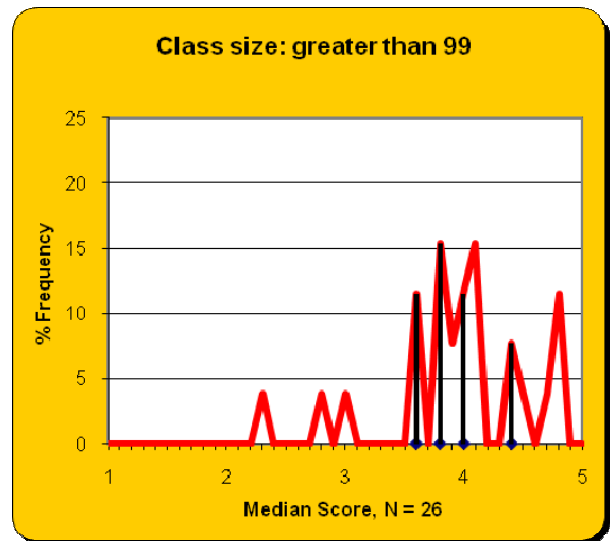
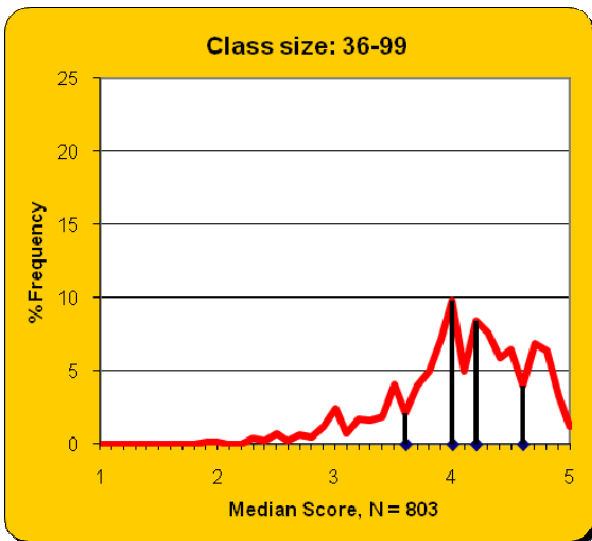
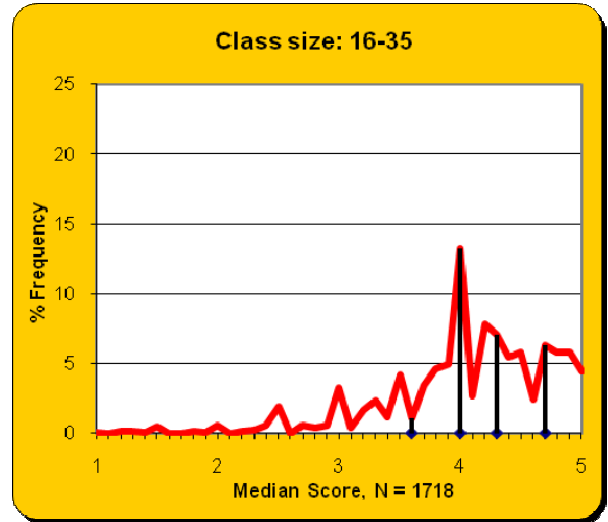
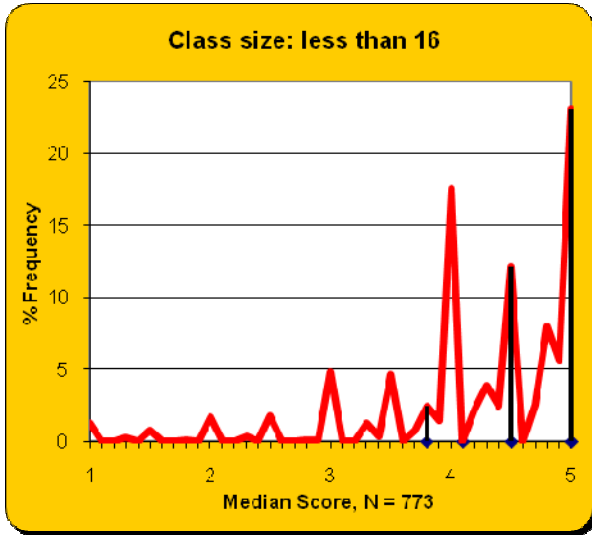
Class Size	N	Median	Cut1	Cut 2	Cut 3	Cut 4
< 16	54	4.78	4.33	4.67	4.90	5.00
16 – 35	109	4.00	3.60	3.83	4.10	4.50
36 – 99	49	4.25	3.82	4.11	4.33	4.68
> 99	1	4.09	4.09	4.09	4.09	4.09

### Fall 2001 – Spring 2010

Class Size	N	Median	Cut1	Cut 2	Cut 3	Cut 4
< 16	773	4.50	3.75	4.08	4.50	5.00
16 – 35	1718	4.13	3.62	4.00	4.25	4.67
36 – 99	803	4.11	3.64	3.96	4.24	4.57
> 99	26	3.96	3.58	3.80	4.03	4.41

COLLEGE OF COMPUTING

Fall 2001 – Spring 2010



## COLLEGE OF ENGINEERING

### Fall 2009

Class Size	N	Median	Cut1	Cut 2	Cut 3	Cut 4
< 16	508	4.32	3.90	4.00	4.50	5.00
16 – 35	319	4.33	3.88	4.17	4.50	4.75
36 – 99	249	4.31	3.88	4.20	4.45	4.73
> 99	17	4.19	3.52	4.14	4.31	4.58

### Spring 2010

Class Size	N	Median	Cut1	Cut 2	Cut 3	Cut 4
< 16	595	4.25	4.00	4.10	4.50	4.83
16 – 35	323	4.36	4.00	4.25	4.50	4.78
36 – 99	216	4.25	3.85	4.17	4.45	4.69
> 99	21	4.44	3.96	4.20	4.60	4.79

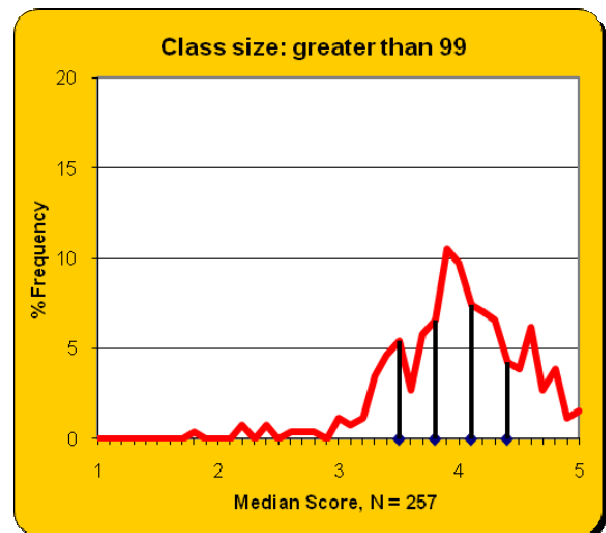
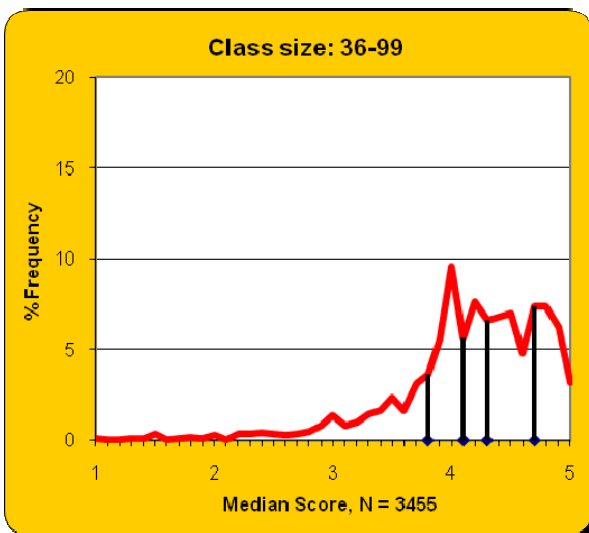
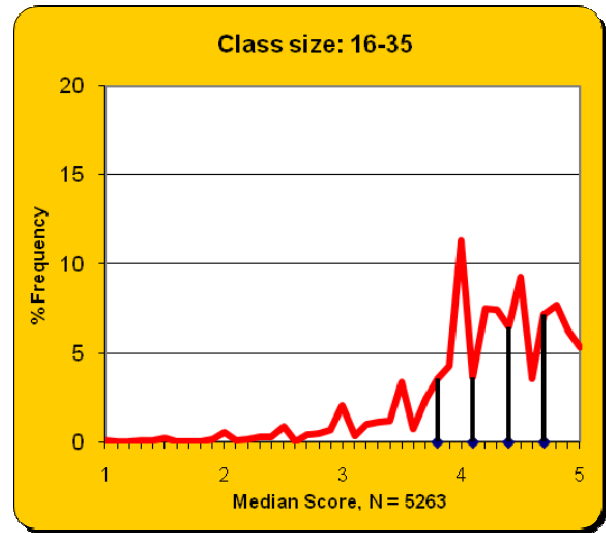
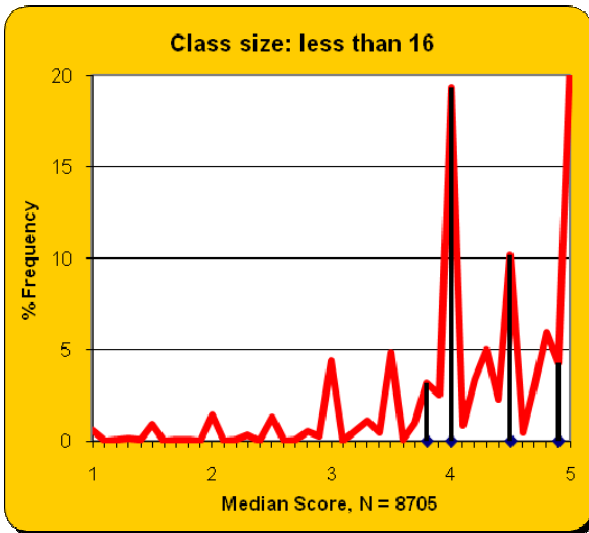
### Fall 2001 – Spring 2010

Class Size	N	Median	Cut1	Cut 2	Cut 3	Cut 4
< 16	8705	4.25	3.75	4.00	4.50	4.94
16 – 35	5263	4.25	3.80	4.13	4.40	4.70
36 – 99	3455	4.20	3.75	4.06	4.33	4.67
> 99	257	3.94	3.52	3.84	4.07	4.40



COLLEGE OF ENGINEERING

Fall 2001 – Spring 2010



**IVAN ALLEN COLLEGE**

**Fall 2009**

<b>Class Size</b>	<b>N</b>	<b>Median</b>	<b>Cut1</b>	<b>Cut 2</b>	<b>Cut 3</b>	<b>Cut 4</b>
< 16	133	4.75	4.00	4.50	4.88	5.00
16 – 35	316	4.63	4.13	4.50	4.67	4.88
36 – 99	22	4.27	4.03	4.22	4.50	4.71
> 99	16	4.36	3.70	4.28	4.43	4.68

**Spring 2010**

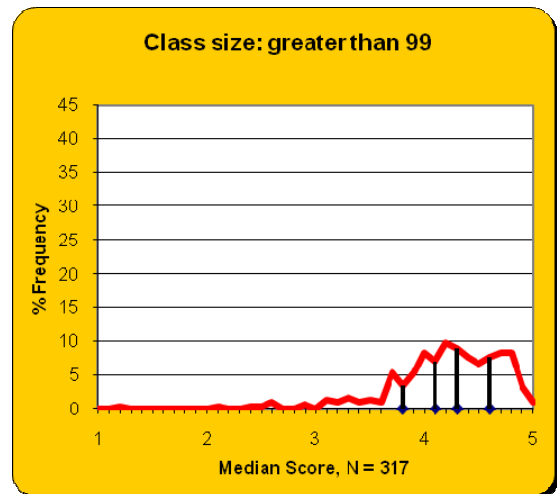
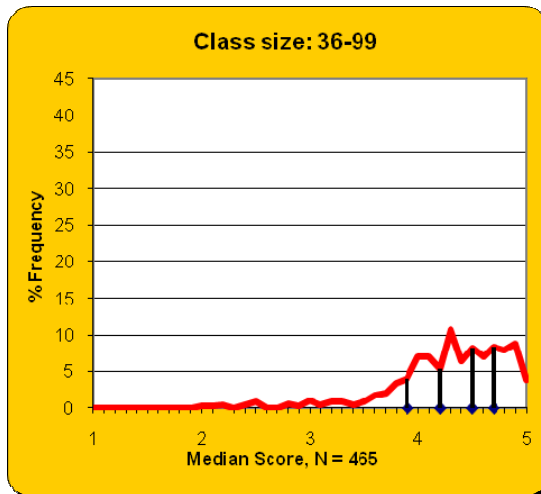
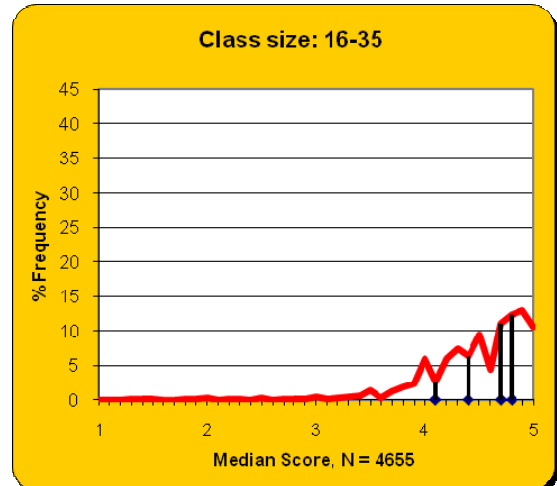
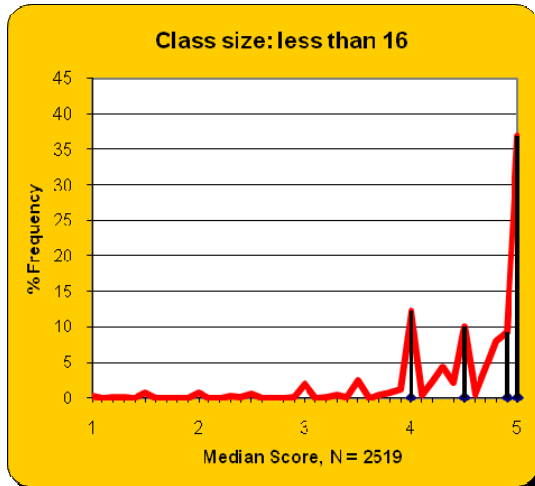
<b>Class Size</b>	<b>N</b>	<b>Median</b>	<b>Cut1</b>	<b>Cut 2</b>	<b>Cut 3</b>	<b>Cut 4</b>
< 16	185	4.81	4.25	4.67	4.88	5.00
16 – 35	287	4.50	4.06	4.38	4.64	4.83
36 – 99	19	4.50	4.24	4.42	4.50	4.71
> 99	15	4.17	3.94	4.11	4.22	4.37

**Fall 2001 – Spring 2010**

<b>Class Size</b>	<b>N</b>	<b>Median</b>	<b>Cut1</b>	<b>Cut 2</b>	<b>Cut 3</b>	<b>Cut 4</b>
< 16	2519	4.75	4.00	4.50	4.88	5.00
16 – 35	4655	4.57	4.13	4.43	4.67	4.83
36 – 99	465	4.32	3.92	4.22	4.50	4.72
> 99	317	4.23	3.83	4.12	4.33	4.61

IVAN ALLEN COLLEGE

Fall 2001 – Spring 2010



**COLLEGE OF MANAGEMENT**

**Fall 2009**

<b>Class Size</b>	<b>N</b>	<b>Median</b>	<b>Cut1</b>	<b>Cut 2</b>	<b>Cut 3</b>	<b>Cut 4</b>
< 16	52	4.90	4.08	4.64	4.93	5.00
16 – 35	41	4.70	4.11	4.48	4.79	4.91
36 – 99	103	4.65	4.17	4.50	4.73	4.86
> 99	2	4.13	4.11	4.12	4.14	4.15

**Spring 2010**

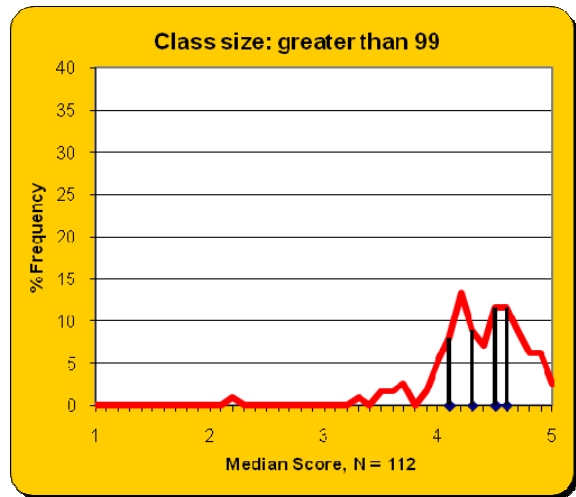
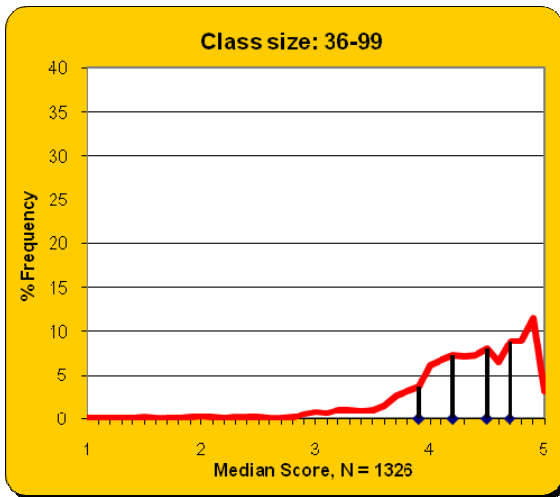
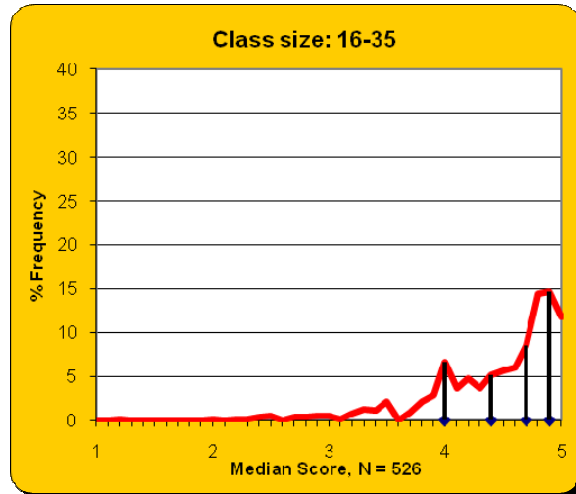
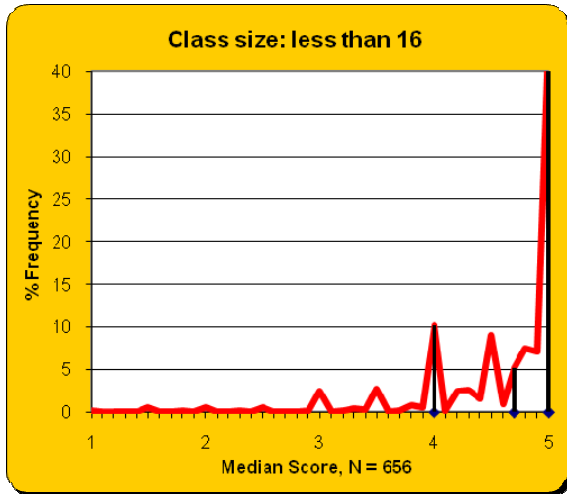
<b>Class Size</b>	<b>N</b>	<b>Median</b>	<b>Cut1</b>	<b>Cut 2</b>	<b>Cut 3</b>	<b>Cut 4</b>
< 16	70	4.82	4.00	4.67	4.92	5.00
16 – 35	47	4.68	4.12	4.55	4.77	4.87
36 – 99	90	4.58	4.23	4.50	4.64	4.81
> 99	2	4.12	4.07	4.09	4.15	4.17

**Fall 2001 – Spring 2010**

<b>Class Size</b>	<b>N</b>	<b>Median</b>	<b>Cut1</b>	<b>Cut 2</b>	<b>Cut 3</b>	<b>Cut 4</b>
< 16	656	4.83	4.00	4.67	4.96	5.00
16 – 35	526	4.60	4.00	4.43	4.72	4.85
36 – 99	1326	4.38	3.94	4.23	4.50	4.74
> 99	112	4.35	4.05	4.26	4.48	4.63

COLLEGE OF MANAGEMENT

Fall 2001 – Spring 2010



## COLLEGE OF SCIENCES

### Fall 2009

Class Size	N	Median	Cut1	Cut 2	Cut 3	Cut 4
< 16	215	4.50	4.00	4.33	4.75	5.00
16 – 35	389	4.10	3.60	4.00	4.25	4.60
36 – 99	70	4.12	3.63	4.00	4.37	4.64
> 99	61	4.10	3.85	4.03	4.16	4.38

### Spring 2010

Class Size	N	Median	Cut1	Cut 2	Cut 3	Cut 4
< 16	263	4.50	4.00	4.38	4.67	4.93
16 – 35	271	4.20	3.78	4.06	4.29	4.58
36 – 99	85	4.05	3.50	3.95	4.27	4.62
> 99	54	4.10	3.86	4.00	4.25	4.47

### Fall 2001 – Spring 2010

Class Size	N	Median	Cut1	Cut 2	Cut 3	Cut 4
< 16	3883	4.33	3.83	4.00	4.50	5.00
16 – 35	5943	4.00	3.50	4.00	4.20	4.58
36 – 99	1668	4.08	3.63	4.00	4.23	4.58
> 99	816	4.02	3.69	3.94	4.11	4.36

COLLEGE OF SCIENCES

Fall 2001 – Spring 2010

