



Center for the Enhancement of Teaching and Learning  
Atlanta, Georgia 30332-0383 USA  
TEL 404-894-4474  
FAX 404-894-4475

August 28, 2013

Dear Colleague:

As you know, CETL processes the Course/Instructor Opinion Survey (CIOS) results for the Institute. For 63 academic terms (39 quarters and 24 semesters—excluding summer sessions), we have been collecting data and reporting descriptive statistics that provide a basis for interpreting individual ratings (categorized by class size because our experience and the general research confirm that class size is a primary variable explaining significant differences in ratings).

The original survey was designed in 1986 and consisted of 26 questions. This was later reduced to 24 questions (questions about the student's gender and ethnicity were eliminated). Beginning in the Fall 2001 semester, a streamlined CIOS (designed by representatives of faculty, students, and administration) was implemented which reduced the number of core questions from 24 to 10 and eliminated cluster scores. In Summer 2011 the survey was again revised, this time to better reflect the literature on survey design and to improve the quality of feedback for instructors. This revised version was again designed by representatives of faculty, students, and administration.

The following report focuses on the survey item "Considering everything, the instructor was an effective teacher", which is commonly referred to as "Item 10". This question has been maintained in the same form throughout all versions of the survey. To provide the most meaningful comparisons with individual scores, we report statistics for each term in the academic year and cumulative results since Fall 2001. This allows faculty to compare their scores with distributions for the specific semesters and for multi-year periods. Central tendencies and distributions of the question are reported by class size category and by college, as well as for the entire Institute. The following notation will help you interpret the report:

- "N" is the number of classes in a particular population frame.
- "Median" is the middle value of an ordered array of classes' interpolated median scores.
- The columns "Cut 1," "Cut 2," "Cut 3," and "Cut 4" indicate the quintile values (20<sup>th</sup>, 40<sup>th</sup>, 60<sup>th</sup>, and 80<sup>th</sup> percentiles) in the distribution. These values are also drawn on the accompanying charts for the cumulative distribution.
- The values range from 1 to 5, where 1 is "strongly disagree" and 5 is "strongly agree".

We trust that these data are helpful to you. If you have any questions, feel free to contact CETL at 4-4474.

Sincerely,

Donna Llewellyn, PhD  
Associate Vice Provost for Learning Excellence  
CETL Director  
donna.llewellyn@cetl.gatech.edu

Tristan T. Utschig, PhD  
CETL Assistant Director  
Scholarship & Assessment of Teaching and Learning  
tris.utschig@cetl.gatech.edu

## INSTITUTE-WIDE

### Fall 2012

Class Size	N	Median	Cut1	Cut 2	Cut 3	Cut 4
< 16	1194	4.67	4.00	4.50	4.80	5.00
16 – 35	1290	4.50	3.88	4.28	4.65	4.83
36 – 99	631	4.35	3.79	4.20	4.50	4.75
> 99	89	4.05	3.51	3.96	4.28	4.72

### Spring 2013

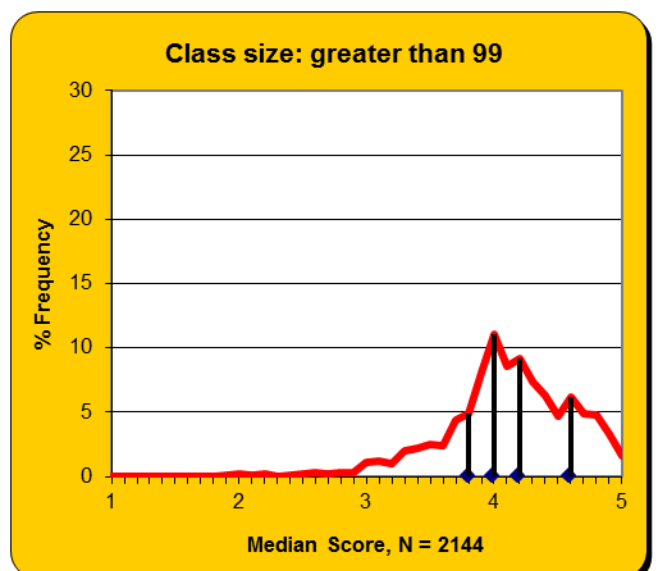
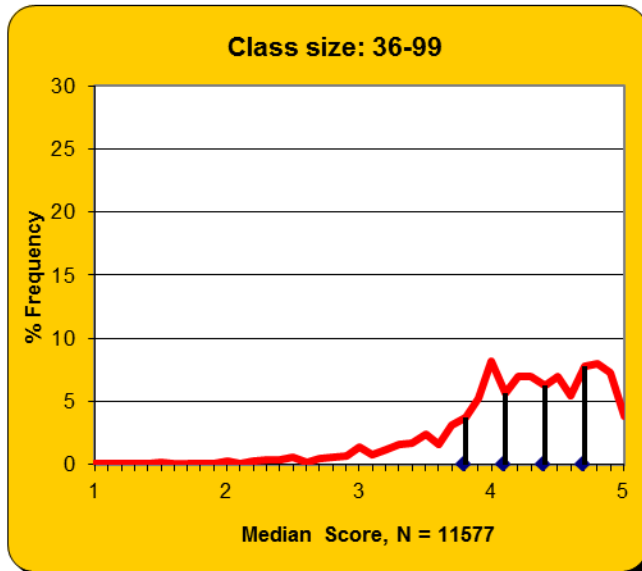
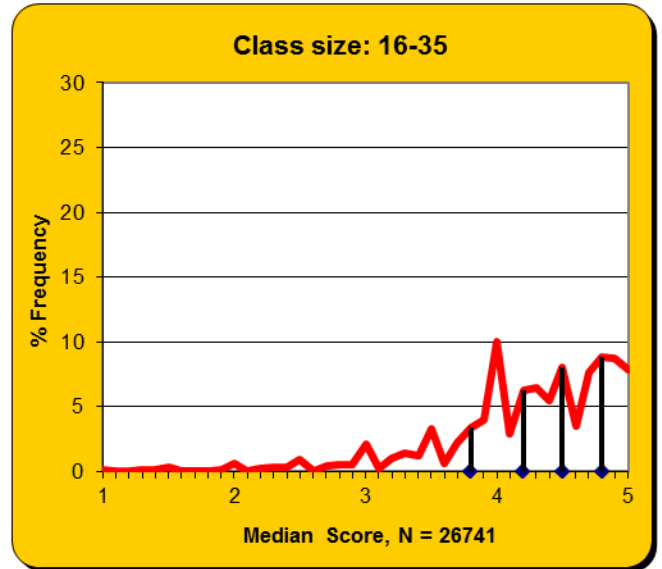
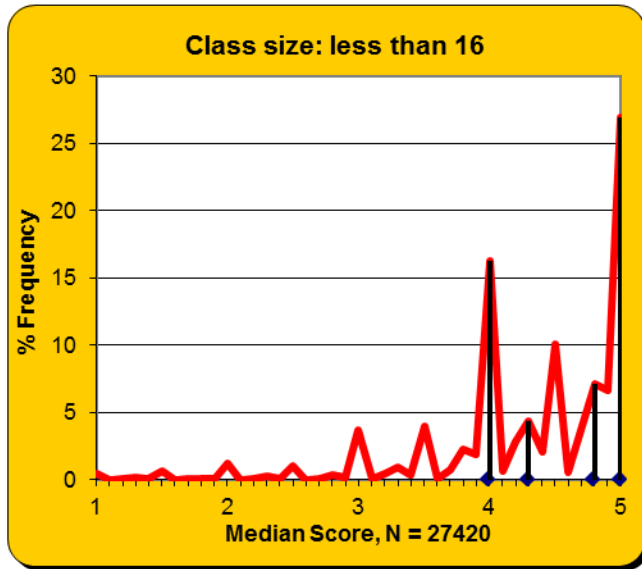
Class Size	N	Median	Cut1	Cut 2	Cut 3	Cut 4
< 16	1310	4.68	4.00	4.50	4.83	5.00
16 – 35	1005	4.54	3.95	4.36	4.67	4.87
36 – 99	594	4.33	3.73	4.17	4.50	4.73
> 99	74	4.01	3.44	3.89	4.19	4.53

### Fall 2001 – Spring 2013

Class Size	N	Median	Cut1	Cut 2	Cut 3	Cut 4
< 16	27420	4.50	4.00	4.25	4.75	5.00
16 – 35	26741	4.31	3.80	4.17	4.50	4.75
36 – 99	11577	4.25	3.75	4.10	4.39	4.69
> 99	2144	4.09	3.73	3.98	4.19	4.52

## INSTITUTE-WIDE

Fall 2001 – Spring 2013



## COLLEGE OF ARCHITECTURE

### Fall 2012

Class Size	N	Median	Cut1	Cut 2	Cut 3	Cut 4
< 16	189	4.83	4.25	4.75	4.88	5.00
16 – 35	52	4.62	3.89	4.36	4.76	4.93
36 – 99	34	4.82	4.25	4.75	4.96	5.00
> 99	7	4.96	3.82	4.47	4.98	4.99

### Spring 2013

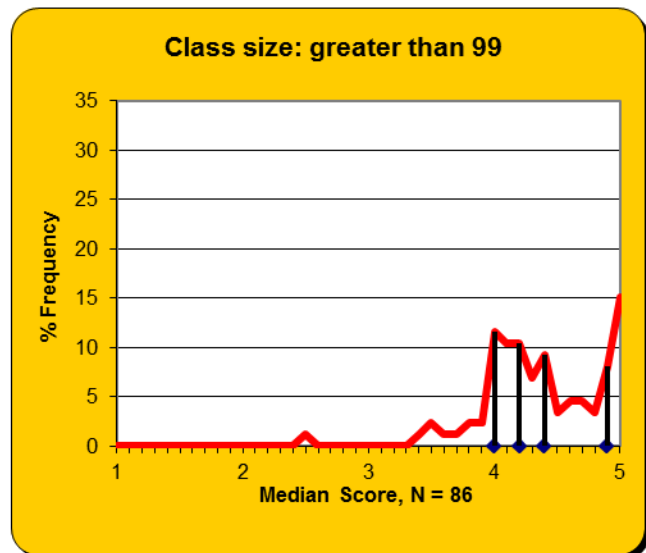
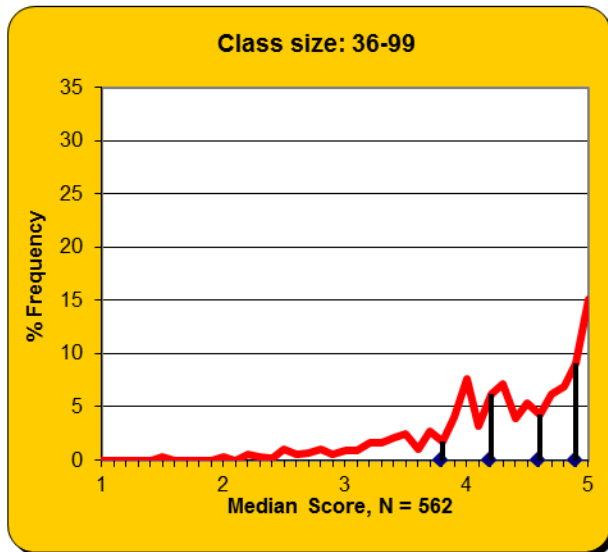
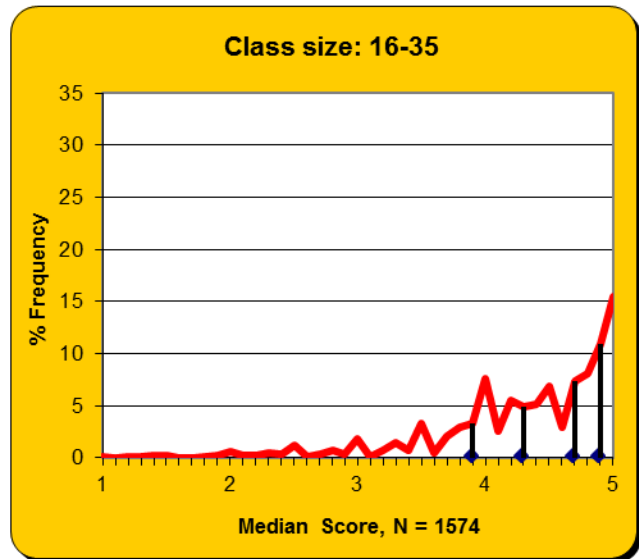
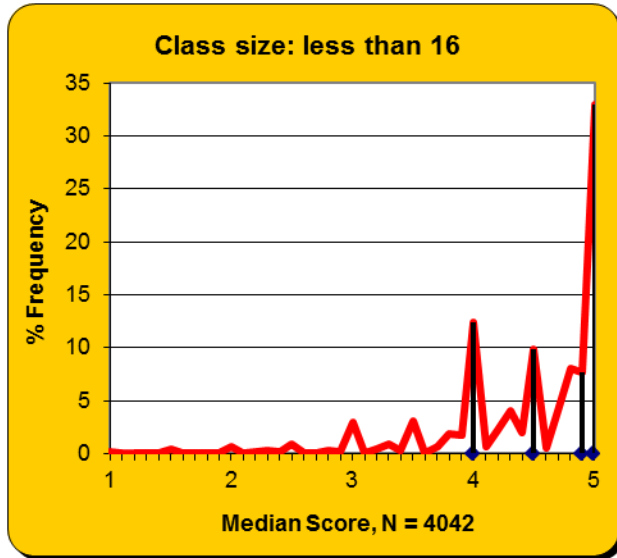
Class Size	N	Median	Cut1	Cut 2	Cut 3	Cut 4
< 16	201	4.80	4.00	4.66	4.86	5.00
16 – 35	62	4.85	4.07	4.67	4.88	5.00
36 – 99	17	4.73	4.25	4.55	4.89	4.98
> 99	2	4.33	4.29	4.30	4.36	n/a

### Fall 2001 – Spring 2013

Class Size	N	Median	Cut1	Cut 2	Cut 3	Cut 4
< 16	4042	4.67	4.00	4.50	4.83	5.00
16 – 35	1574	4.50	3.83	4.25	4.63	4.88
36 – 99	562	4.32	3.75	4.17	4.55	4.86
> 99	86	4.29	3.98	4.15	4.40	4.88

## COLLEGE OF ARCHITECTURE

Fall 2001 – Spring 2013



## COLLEGE OF COMPUTING

### Fall 2012

Class Size	N	Median	Cut1	Cut 2	Cut 3	Cut 4
< 16	60	4.50	4.00	4.20	4.64	4.98
16 – 35	63	4.60	4.09	4.47	4.68	4.79
36 – 99	85	4.27	3.41	4.04	4.38	4.62
> 99	1	4.50	4.50	4.50	4.50	4.50

### Spring 2013

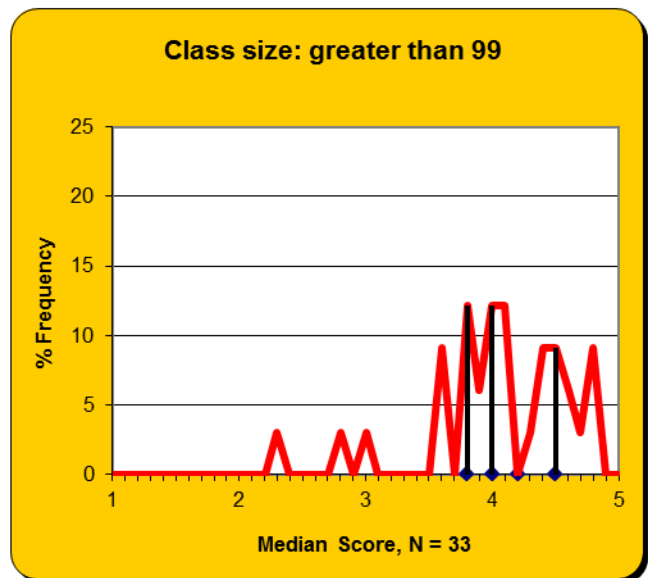
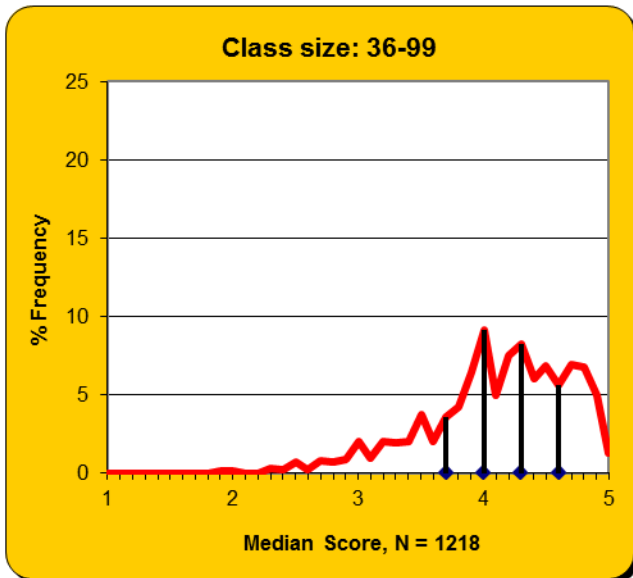
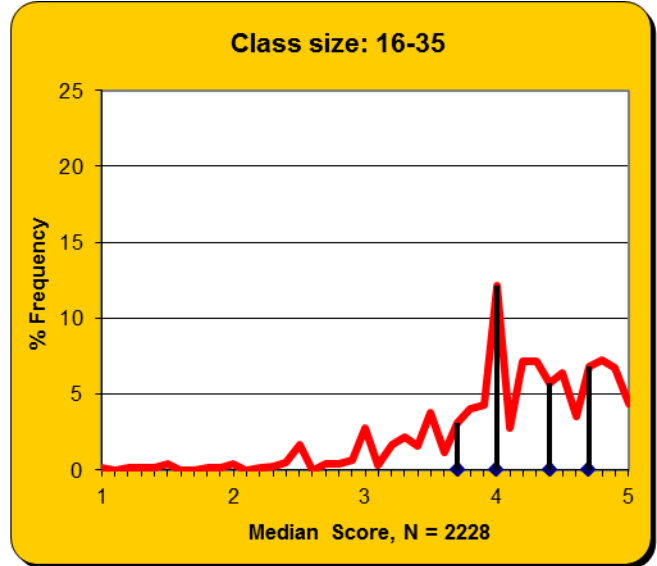
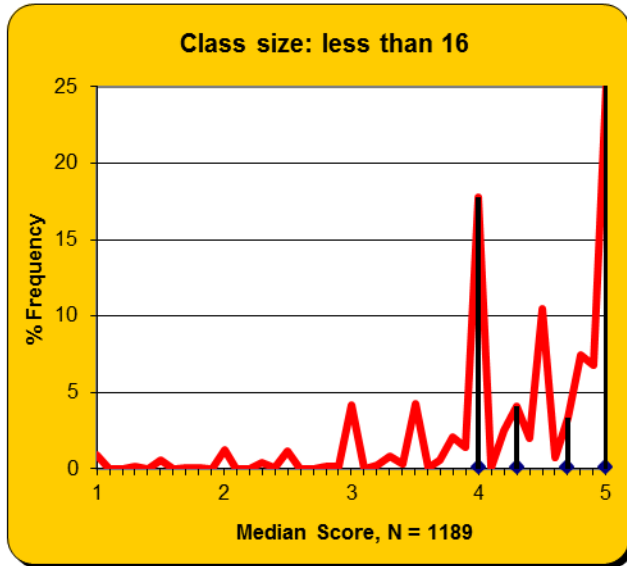
Class Size	N	Median	Cut1	Cut 2	Cut 3	Cut 4
< 16	68	4.77	4.00	4.67	4.90	5.00
16 – 35	67	4.59	4.35	4.54	4.68	4.82
36 – 99	77	4.23	3.44	4.01	4.31	4.64
> 99	2	4.49	4.46	4.47	4.51	n/a

### Fall 2001 – Spring 2013

Class Size	N	Median	Cut1	Cut 2	Cut 3	Cut 4
< 16	1189	4.50	4.00	4.25	4.70	5.00
16 – 35	2228	4.17	3.67	4.00	4.33	4.68
36 – 99	1218	4.16	3.67	4.00	4.29	4.60
> 99	33	4.03	3.68	3.96	4.17	4.50

COLLEGE OF COMPUTING

Fall 2001 – Spring 2013



## COLLEGE OF ENGINEERING

### Fall 2012

Class Size	N	Median	Cut1	Cut 2	Cut 3	Cut 4
< 16	453	4.50	3.75	4.07	4.67	4.92
16 – 35	347	4.40	3.83	4.25	4.60	4.80
36 – 99	268	4.30	3.77	4.15	4.46	4.71
> 99	13	3.86	3.12	3.71	4.08	4.73

### Spring 2013

Class Size	N	Median	Cut1	Cut 2	Cut 3	Cut 4
< 16	458	4.38	4.00	4.11	4.58	4.94
16 – 35	294	4.33	3.81	4.12	4.50	4.75
36 – 99	290	4.31	3.75	4.14	4.50	4.71
> 99	12	3.99	3.18	3.64	4.16	4.75

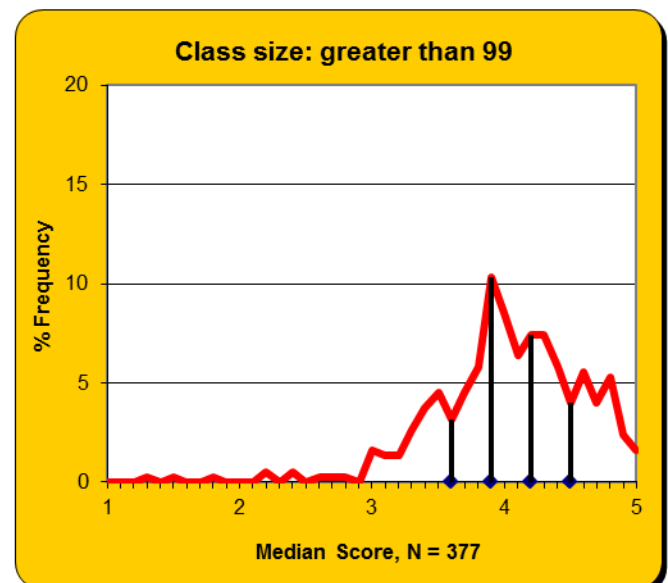
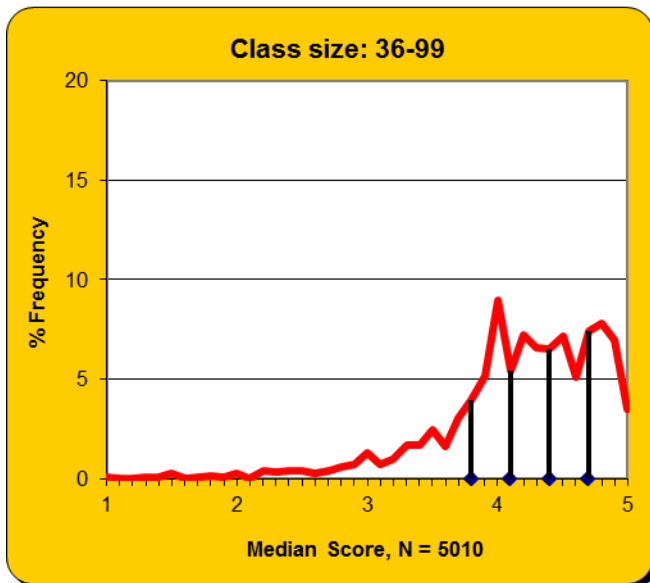
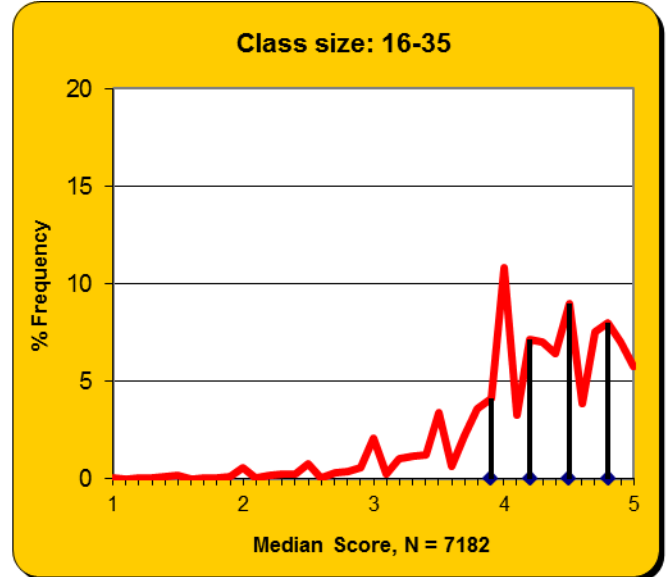
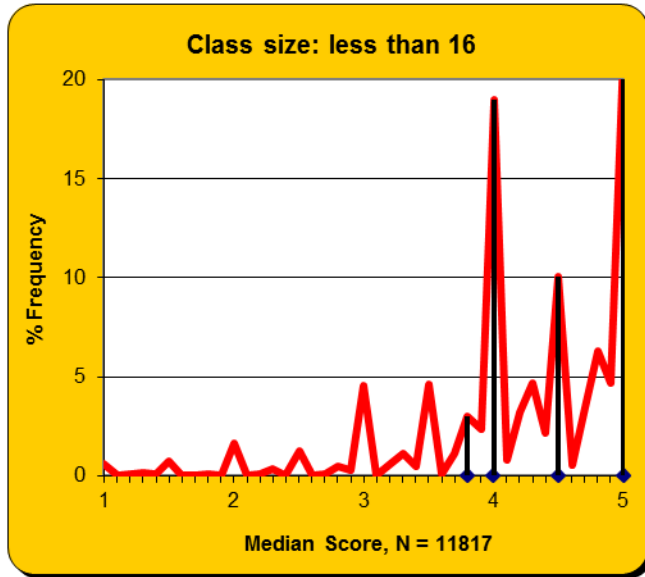
### Fall 2001 – Spring 2013

Class Size	N	Median	Cut1	Cut 2	Cut 3	Cut 4
< 16	11817	4.25	3.75	4.00	4.50	5.00
16 – 35	7182	4.25	3.81	4.13	4.44	4.71
36 – 99	5010	4.22	3.75	4.08	4.38	4.68
> 99	377	4.00	3.57	3.89	4.15	4.50



## COLLEGE OF ENGINEERING

Fall 2001 – Spring 2013



**IVAN ALLEN COLLEGE**

**Fall 2012**

Class Size	N	Median	Cut1	Cut 2	Cut 3	Cut 4
< 16	172	4.83	4.46	4.75	4.90	5.00
16 – 35	321	4.68	4.17	4.53	4.75	4.88
36 – 99	18	4.37	4.13	4.35	4.50	4.78
> 99	15	4.25	3.76	4.04	4.34	4.56

**Spring 2013**

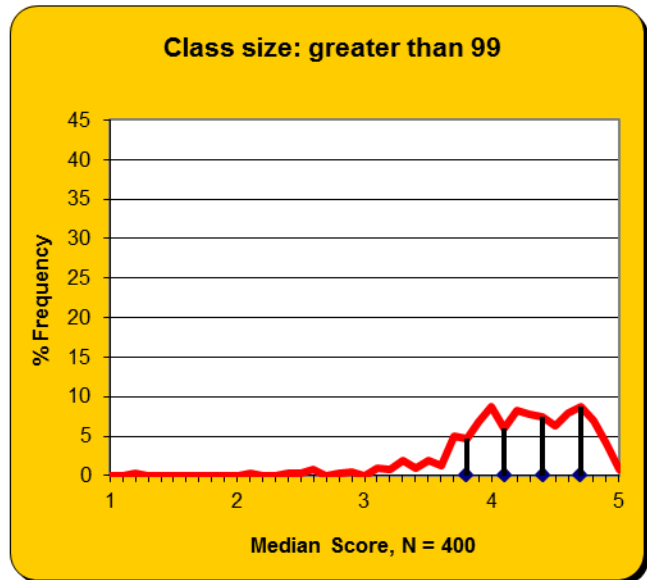
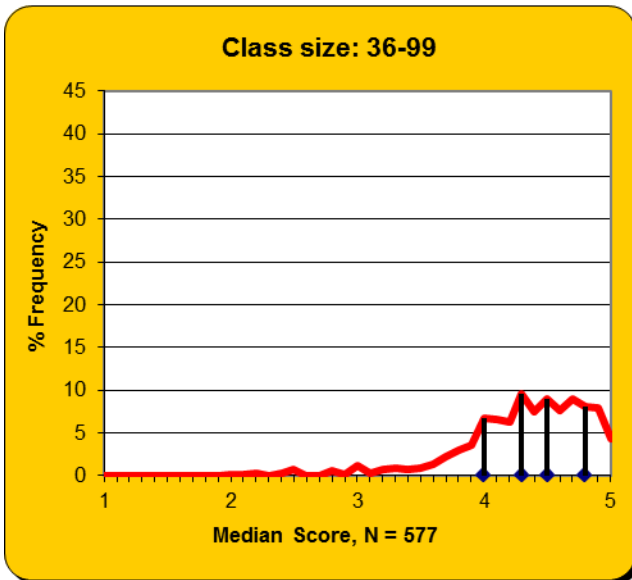
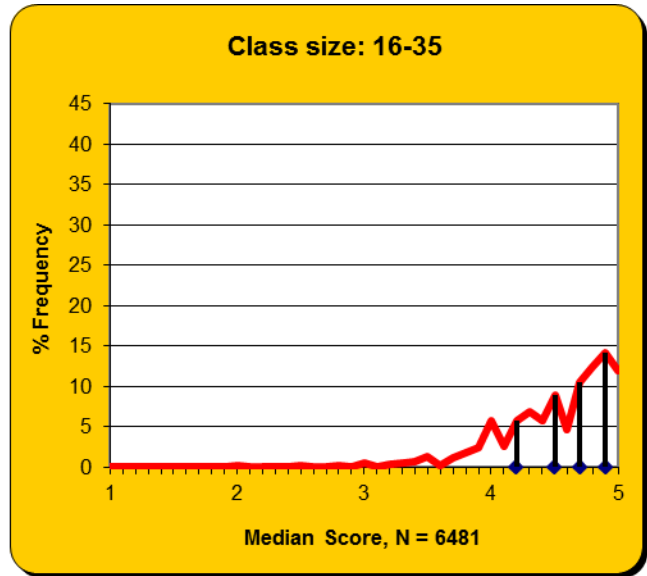
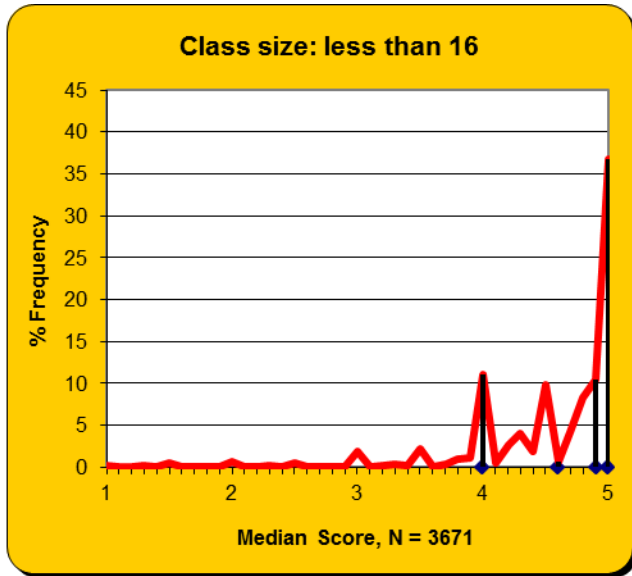
Class Size	N	Median	Cut1	Cut 2	Cut 3	Cut 4
< 16	223	4.83	4.09	4.75	4.90	5.00
16 – 35	296	4.75	4.25	4.60	4.80	4.91
36 – 99	20	4.53	4.02	4.39	4.63	4.73
> 99	12	3.90	3.39	3.85	4.27	4.66

**Fall 2001 – Spring 2013**

Class Size	N	Median	Cut1	Cut 2	Cut 3	Cut 4
< 16	3671	4.75	4.00	4.60	4.88	5.00
16 – 35	6481	4.60	4.13	4.50	4.70	4.85
36 – 99	577	4.36	3.98	4.25	4.50	4.71
> 99	400	4.20	3.80	4.08	4.33	4.61

IVAN ALLEN COLLEGE

Fall 2001 – Spring 2013



**SCHELLER COLLEGE OF BUSINESS**

**Fall 2012**

<b>Class Size</b>	<b>N</b>	<b>Median</b>	<b>Cut1</b>	<b>Cut 2</b>	<b>Cut 3</b>	<b>Cut 4</b>
< 16	67	4.83	4.00	4.67	4.89	5.00
16 – 35	60	4.75	4.31	4.62	4.81	4.89
36 – 99	121	4.60	4.08	4.50	4.70	4.85
> 99	0	n/a	n/a	n/a	n/a	n/a

**Spring 2013**

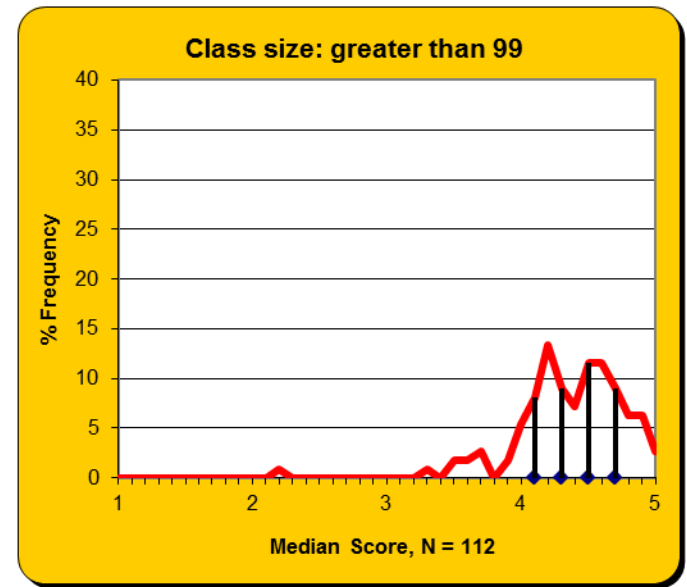
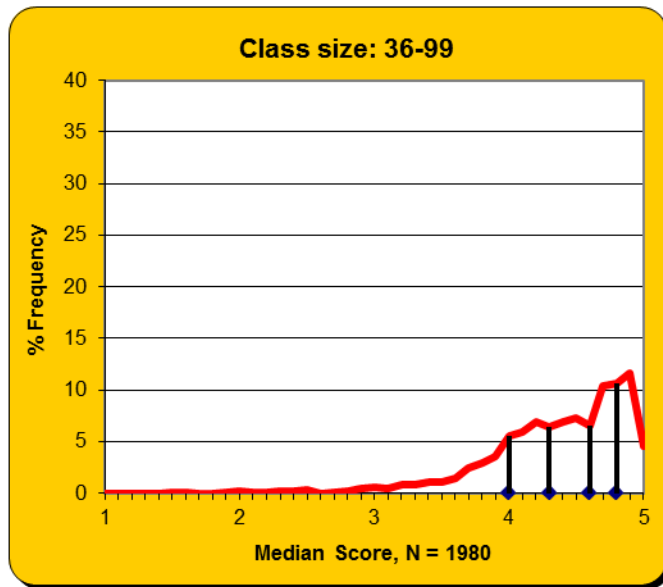
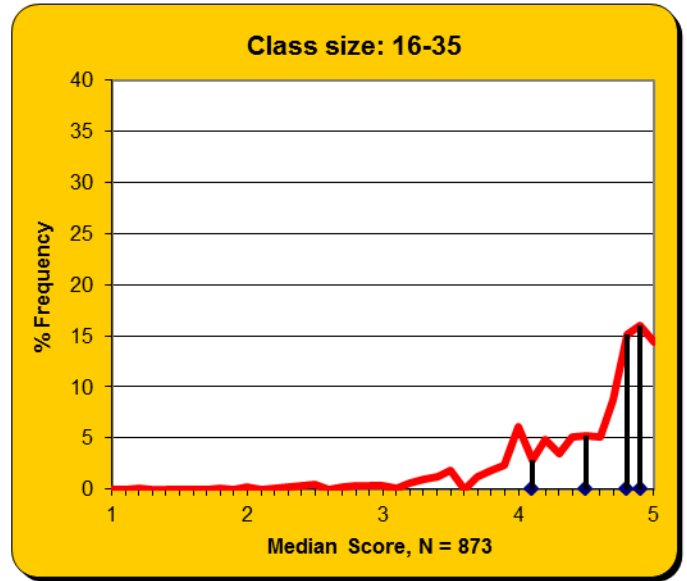
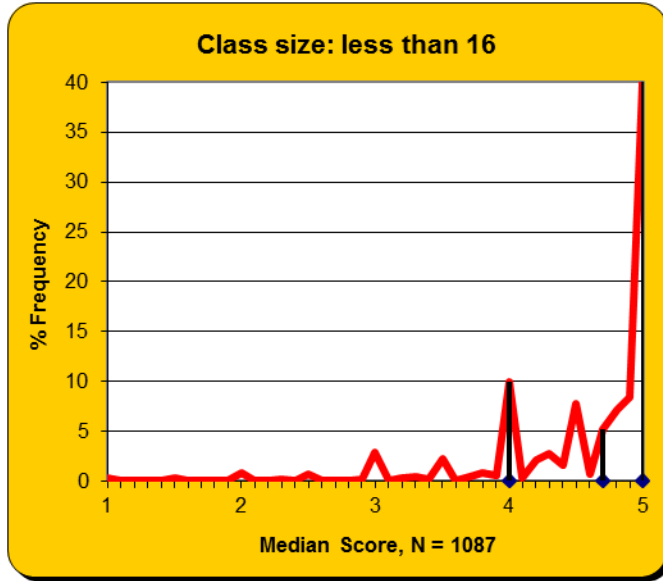
<b>Class Size</b>	<b>N</b>	<b>Median</b>	<b>Cut1</b>	<b>Cut 2</b>	<b>Cut 3</b>	<b>Cut 4</b>
< 16	88	4.75	4.00	4.56	4.88	5.00
16 – 35	55	4.79	4.36	4.71	4.83	4.91
36 – 99	107	4.61	4.09	4.38	4.67	4.81
> 99	0	n/a	n/a	n/a	n/a	n/a

**Fall 2001 – Spring 2013**

<b>Class Size</b>	<b>N</b>	<b>Median</b>	<b>Cut1</b>	<b>Cut 2</b>	<b>Cut 3</b>	<b>Cut 4</b>
< 16	1087	4.83	4.00	4.67	5.00	5.00
16 – 35	873	4.67	4.07	4.50	4.75	4.88
36 – 99	1980	4.42	3.97	4.27	4.56	4.76
> 99	112	4.34	4.05	4.26	4.48	4.63

SCHELLER COLLEGE OF BUSINESS

Fall 2001 – Spring 2013



## COLLEGE OF SCIENCES

### Fall 2012

Class Size	N	Median	Cut1	Cut 2	Cut 3	Cut 4
< 16	201	4.50	4.00	4.33	4.75	4.92
16 – 35	330	4.00	3.25	3.94	4.25	4.71
36 – 99	98	4.08	3.54	3.99	4.25	4.63
> 99	52	4.02	3.24	3.86	4.12	4.60

### Spring 2013

Class Size	N	Median	Cut1	Cut 2	Cut 3	Cut 4
< 16	237	4.75	4.00	4.50	4.83	5.00
16 – 35	217	4.17	3.25	4.00	4.33	4.75
36 – 99	81	4.00	3.14	3.89	4.23	4.56
> 99	45	3.99	3.46	3.86	4.11	4.41

### Fall 2001 – Spring 2013

Class Size	N	Median	Cut1	Cut 2	Cut 3	Cut 4
< 16	5124	4.50	3.90	4.14	4.63	5.00
16 – 35	7618	4.00	3.50	4.00	4.21	4.61
36 – 99	2134	4.08	3.59	3.98	4.23	4.58
> 99	1131	4.03	3.70	3.95	4.13	4.39

COLLEGE OF SCIENCES

Fall 2001 – Spring 2013

