



Center for the Enhancement of Teaching and Learning  
Atlanta, Georgia 30332-0383 USA  
TEL 404-894-4474  
FAX 404-894-4475

July 17, 2005

Dear Colleague:

As you know, CETL processes the Course/Instructor Opinion Survey (CIOS) results for the Institute. For 47 academic terms (39 quarters and 8 semesters—excluding summer sessions), we have been collecting data and reporting descriptive statistics that provide a basis for interpreting individual ratings (categorized by class size because our experience and the general research confirm that class size is a primary variable explaining significant differences in evaluation scores).

Beginning in the Fall 2001 semester, a new streamlined CIOS was implemented. The new survey—designed by representatives of faculty, students, and administration—reduced the number of core questions from 24 to 10 and eliminated cluster scores. The following report focuses on question 10, “The instructor was an effective teacher” (formerly question 24). To provide the most meaningful comparisons with individual scores, we report statistics on question 10 for each term in the academic year and cumulative results since Fall 2001. This allows faculty to compare their scores with distributions for the specific semesters and for multi-year periods. Central tendencies and distributions of the question are reported by class size category and by college, as well as for the entire Institute. The following notation will help you interpret the report:

- “N” is the number of classes in a particular population frame.
- “Median” is the middle value of an ordered array of classes’ interpolated median scores.
- The columns “Cut 1,” “Cut 2,” “Cut 3,” and “Cut 4” indicate the quintile values (20<sup>th</sup>, 40<sup>th</sup>, 60<sup>th</sup>, and 80<sup>th</sup> percentiles) in the distribution. These values are also drawn on the accompanying charts for the cumulative distribution.
- The values range from 1 to 5, where 1 is “strongly disagree” and 5 is “strongly agree”.

I trust that these data are helpful to you. If you have any questions, feel free to contact me at [donna.llewellyn@cetl.gatech.edu](mailto:donna.llewellyn@cetl.gatech.edu) or 4-2340.

Sincerely,

Donna Llewellyn, PhD  
CETL Director

## INSTITUTE-WIDE

### Fall 2004

Class Size	N	Median	Cut1	Cut 2	Cut 3	Cut 4
< 16	1042	4.50	3.88	4.13	4.50	5.00
16 – 35	1056	4.25	3.83	4.10	4.38	4.75
36 – 99	427	4.14	3.75	4.03	4.28	4.63
> 99	88	4.00	3.57	3.92	4.11	4.29

### Spring 2005

Class Size	N	Median	Cut1	Cut 2	Cut 3	Cut 4
< 16	1237	4.50	3.75	4.15	4.67	5.00
16 – 35	927	4.25	3.75	4.12	4.40	4.69
36 – 99	419	4.10	3.63	3.96	4.23	4.60
> 99	85	3.98	3.57	3.91	4.03	4.39

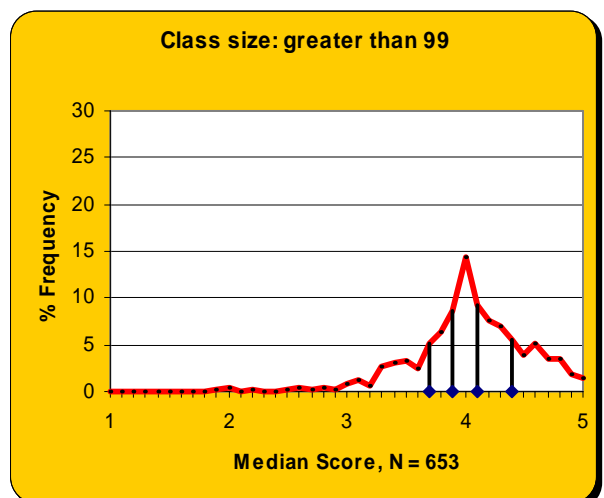
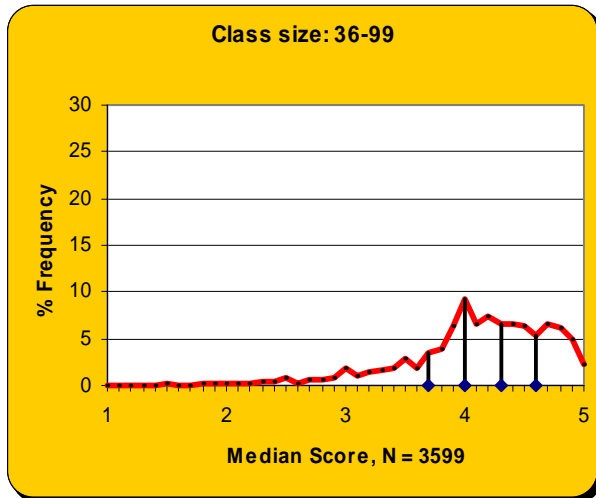
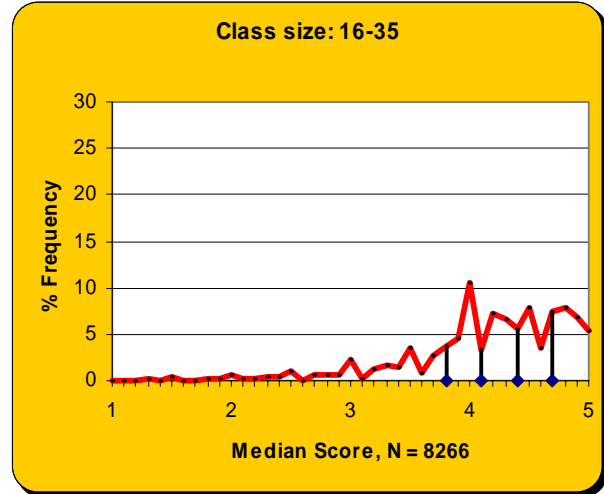
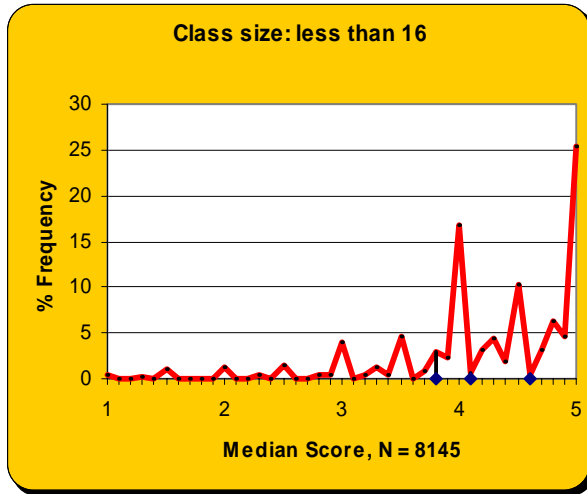
### Fall 2001 – Spring 2005

Class Size	N	Median	Cut1	Cut 2	Cut 3	Cut 4
< 16	8145	4.50	3.75	4.10	4.58	5.00
16 – 35	8266	4.25	3.75	4.08	4.38	4.71
36 – 99	3599	4.14	3.67	4.00	4.28	4.60
> 99	653	4.00	3.67	3.93	4.10	4.39

---

# Descriptive Statistics for Item 10 2001-2005

Fall 2001 – Spring 2005



## COLLEGE OF ARCHITECTURE

### Fall 2004

Class Size	N	Median	Cut1	Cut 2	Cut 3	Cut 4
< 16	135	4.50	4.00	4.33	4.75	5.00
16 – 35	56	4.33	3.86	4.19	4.35	4.70
36 – 99	13	4.19	3.98	4.14	4.34	4.63
> 99	17	4.50	4.00	4.50	4.50	4.70

### Spring 2005

Class Size	N	Median	Cut1	Cut 2	Cut 3	Cut 4
< 16	186	4.50	3.78	4.23	4.75	5.00
16 – 35	69	4.40	4.00	4.13	4.50	4.83
36 – 99	18	4.17	3.19	3.74	4.34	4.63
> 99	3	4.00	3.97	3.99	4.10	4.25

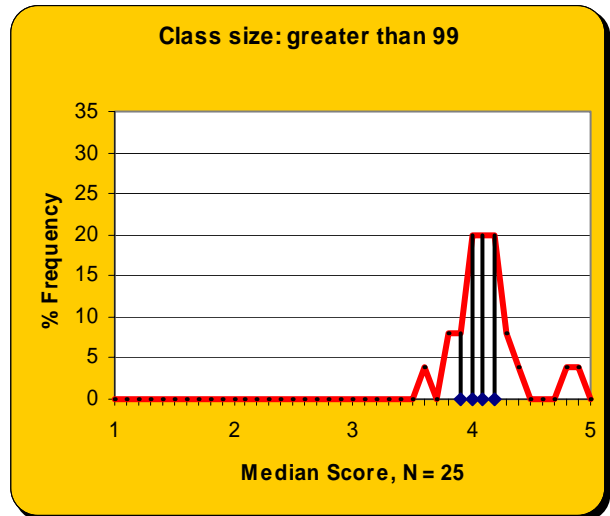
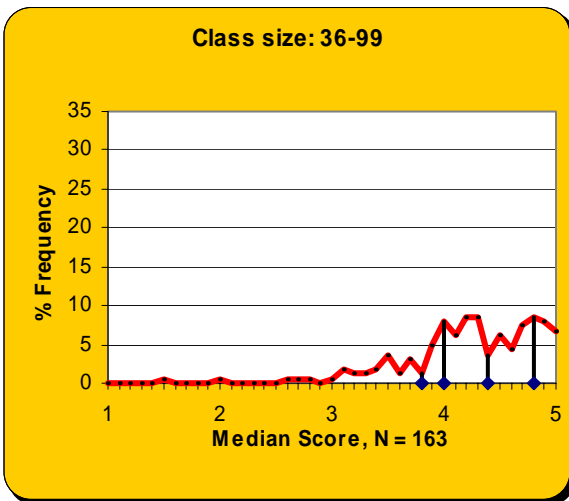
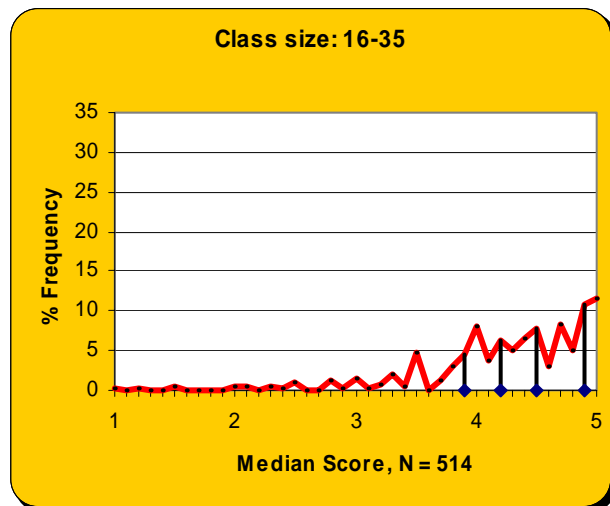
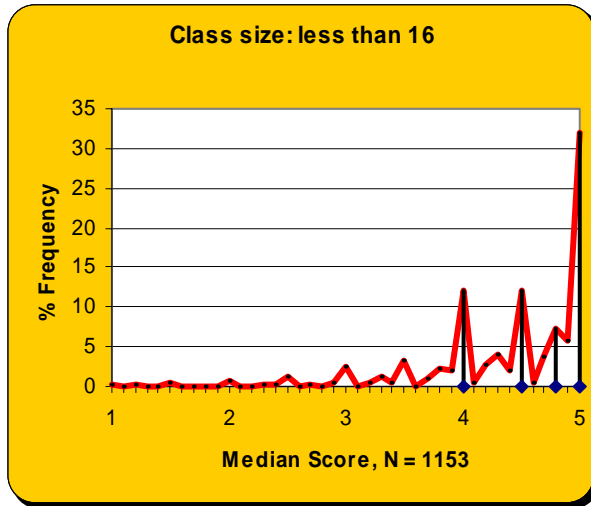
### Fall 2001 – Spring 2005

Class Size	N	Median	Cut1	Cut 2	Cut 3	Cut 4
< 16	1153	4.50	4.00	4.50	4.75	5.00
16 – 35	514	4.33	3.85	4.17	4.50	4.83
36 – 99	163	4.25	3.81	4.14	4.42	4.75
> 99	25	4.04	3.91	4.01	4.11	4.24

---

# Descriptive Statistics for Item 10 2001-2005

Fall 2001 – Spring 2005



## COLLEGE OF COMPUTING

### Fall 2004

Class Size	N	Median	Cut1	Cut 2	Cut 3	Cut 4
< 16	17	4.50	4.00	4.50	4.50	4.70
16 – 35	75	4.25	4.00	4.18	4.36	4.67
36 – 99	51	4.06	3.68	3.99	4.21	4.47
> 99						

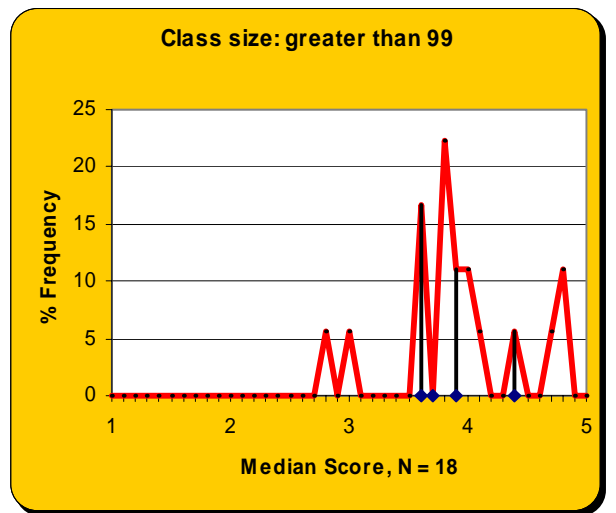
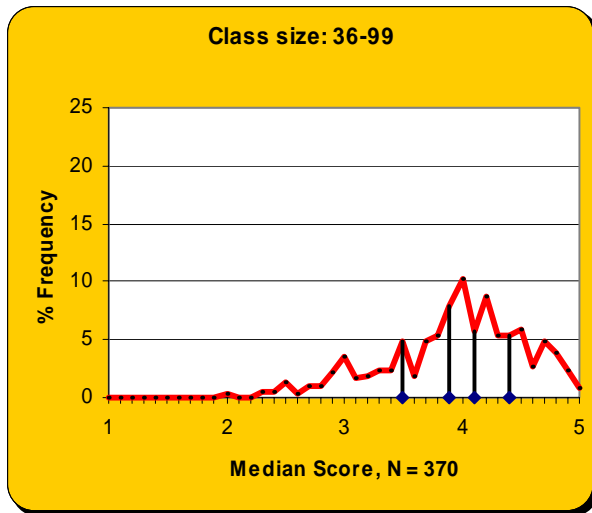
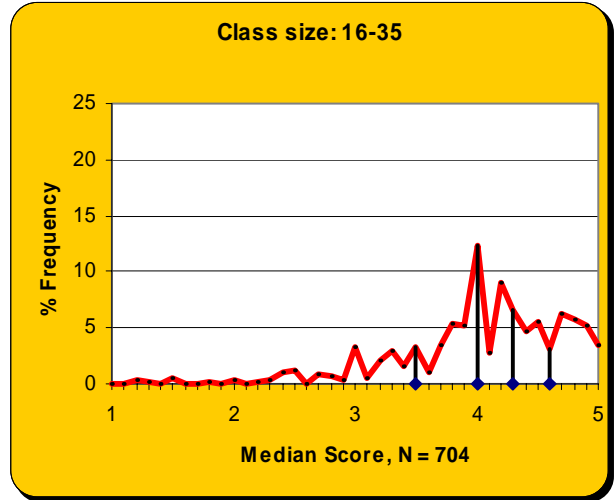
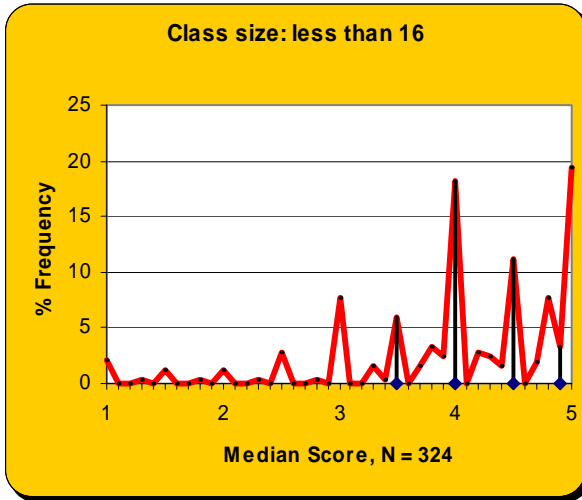
### Spring 2005

Class Size	N	Median	Cut1	Cut 2	Cut 3	Cut 4
< 16	25	4.00	3.00	4.00	4.30	4.75
16 – 35	53	4.50	3.92	4.23	4.58	4.72
36 – 99	62	3.93	3.50	3.88	4.09	4.33
> 99	1	3.59	3.59	3.59	3.59	3.59

### Fall 2001 – Spring 2005

Class Size	N	Median	Cut1	Cut 2	Cut 3	Cut 4
< 16	324	4.17	3.50	4.00	4.50	4.89
16 – 35	704	4.10	3.50	4.00	4.25	4.63
36 – 99	370	4.00	3.45	3.87	4.11	4.42
> 99	18	3.78	3.56	3.74	3.86	4.43

Fall 2001 – Spring 2005



## COLLEGE OF ENGINEERING

### Fall 2004

Class Size	N	Median	Cut1	Cut 2	Cut 3	Cut 4
< 16	479	4.20	3.75	4.00	4.50	4.92
16 – 35	302	4.21	3.87	4.09	4.33	4.70
36 – 99	164	4.19	3.75	4.04	4.33	4.63
> 99	15	3.84	3.41	3.81	3.94	4.19

### Spring 2005

Class Size	N	Median	Cut1	Cut 2	Cut 3	Cut 4
< 16	569	4.33	3.75	4.00	4.50	5.00
16 – 35	287	4.17	3.67	4.06	4.30	4.61
36 – 99	166	4.16	3.69	4.00	4.28	4.67
> 99	16	3.96	3.67	3.90	3.99	4.11

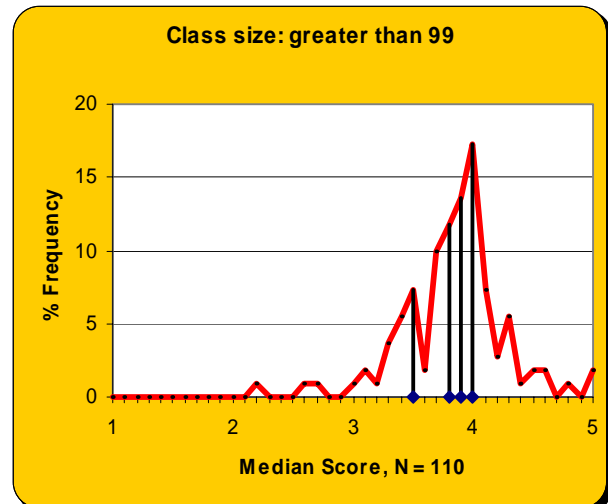
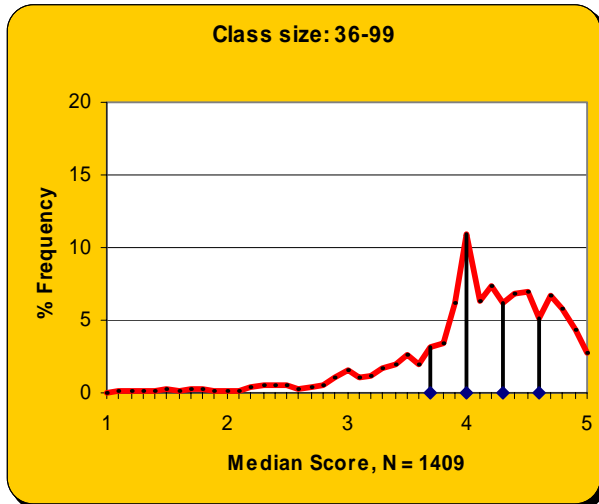
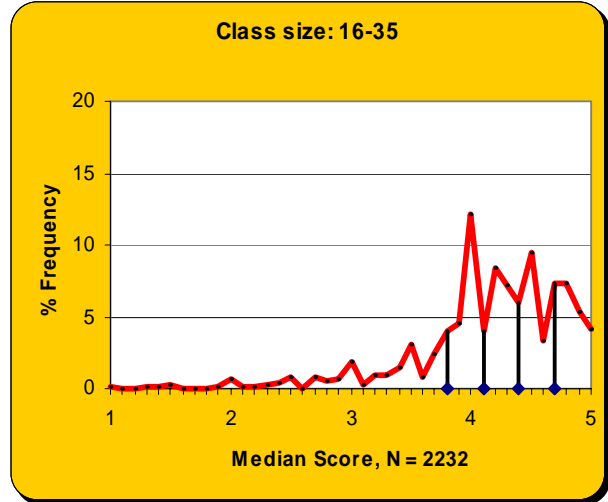
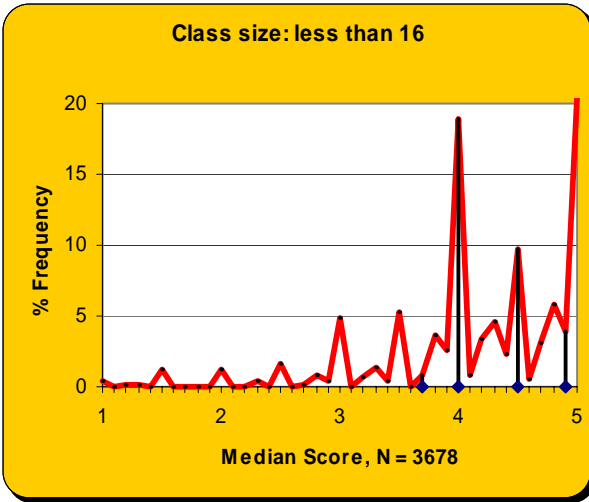
### Fall 2001 – Spring 2005

Class Size	N	Median	Cut1	Cut 2	Cut 3	Cut 4
< 16	3678	4.25	3.67	4.00	4.50	4.93
16 – 35	2232	4.21	3.75	4.09	4.36	4.67
36 – 99	1409	4.14	3.68	4.00	4.28	4.60
> 99	110	3.83	3.50	3.75	3.91	4.04

---



Fall 2001 – Spring 2005



**IVAN ALLEN COLLEGE**

**Fall 2004**

<b>Class Size</b>	<b>N</b>	<b>Median</b>	<b>Cut1</b>	<b>Cut 2</b>	<b>Cut 3</b>	<b>Cut 4</b>
< 16	135	4.60	4.00	4.44	4.83	5.00
16 – 35	253	4.50	4.13	4.38	4.67	4.82
36 – 99	29	4.38	3.75	4.17	4.56	4.70
> 99	18	4.19	3.64	4.08	4.31	4.59

**Spring 2005**

<b>Class Size</b>	<b>N</b>	<b>Median</b>	<b>Cut1</b>	<b>Cut 2</b>	<b>Cut 3</b>	<b>Cut 4</b>
< 16	144	4.75	4.00	4.60	4.83	5.00
16 – 35	248	4.55	4.13	4.39	4.64	4.80
36 – 99	27	4.13	3.62	4.06	4.28	4.67
> 99	13	3.99	3.54	3.76	4.12	4.58

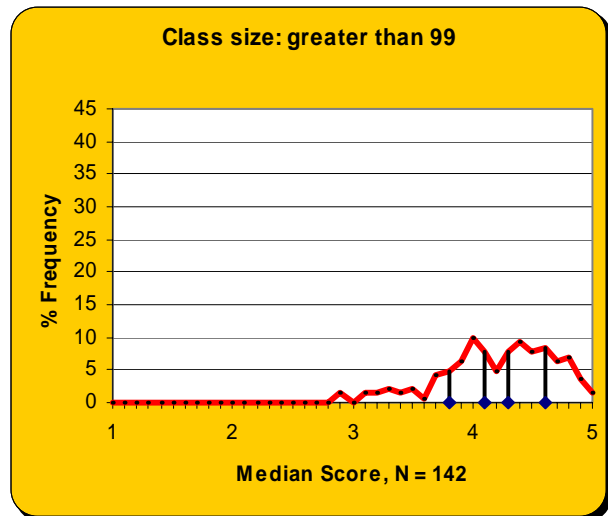
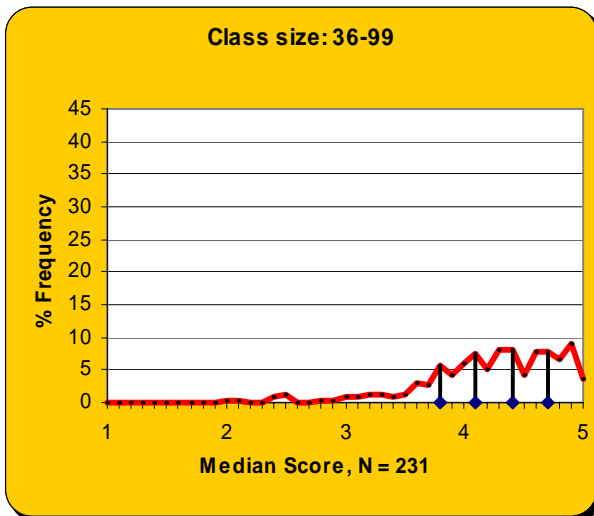
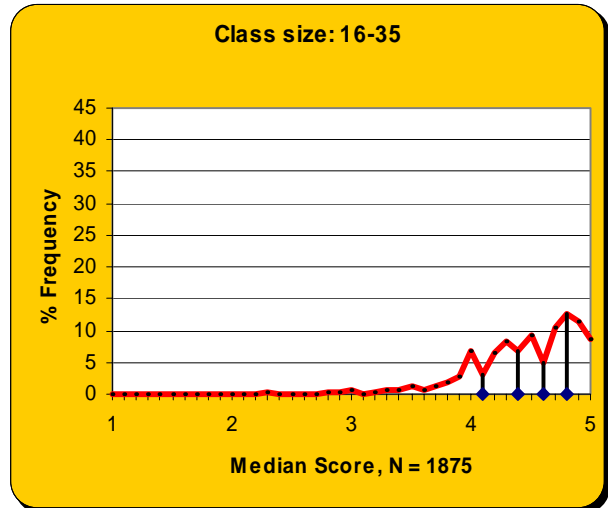
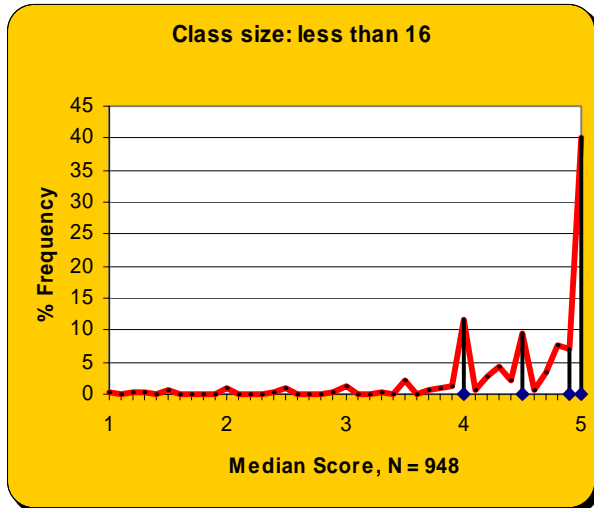
**Fall 2001 – Spring 2005**

<b>Class Size</b>	<b>N</b>	<b>Median</b>	<b>Cut1</b>	<b>Cut 2</b>	<b>Cut 3</b>	<b>Cut 4</b>
< 16	948	4.75	4.00	4.50	4.91	5.00
16 – 35	1875	4.50	4.08	4.36	4.64	4.80
36 – 99	231	4.28	3.76	4.13	4.40	4.70
> 99	142	4.24	3.81	4.07	4.33	4.58

---

# Descriptive Statistics for Item 10 2001-2005

Fall 2001 – Spring 2005



## COLLEGE OF MANAGEMENT

### Fall 2004

Class Size	N	Median	Cut1	Cut 2	Cut 3	Cut 4
< 16	40	4.82	4.00	4.50	5.00	5.00
16 – 35	32	4.29	3.78	4.10	4.55	4.83
36 – 99	66	4.24	3.95	4.17	4.39	4.69
> 99	5	4.61	4.22	4.48	4.71	4.89

### Spring 2005

Class Size	N	Median	Cut1	Cut 2	Cut 3	Cut 4
< 16	50	4.82	4.00	4.75	4.89	5.00
16 – 35	20	4.66	4.23	4.59	4.71	4.85
36 – 99	65	4.25	3.78	4.14	4.42	4.69
> 99	9	4.37	4.02	4.33	4.41	4.63

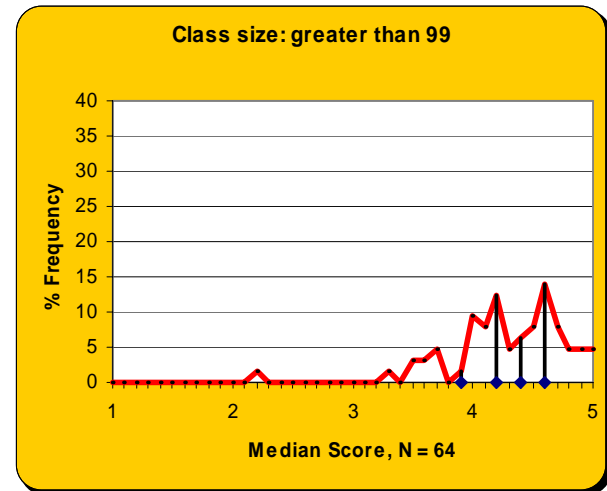
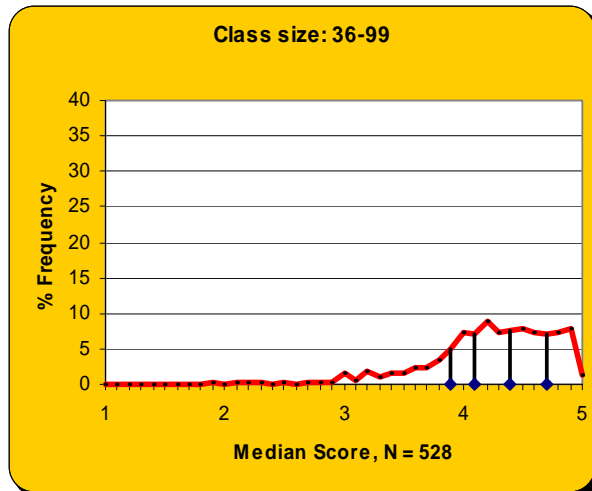
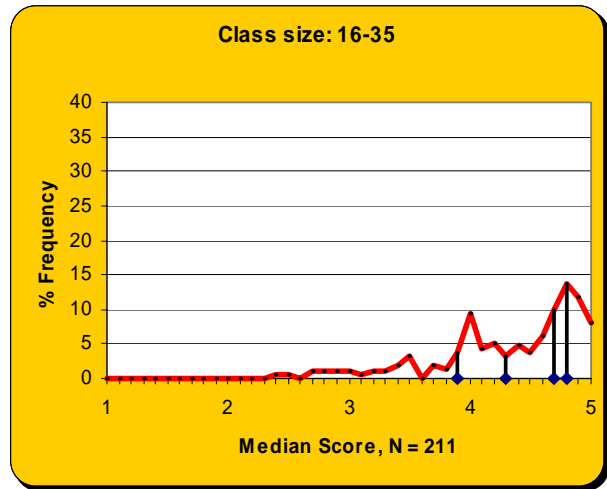
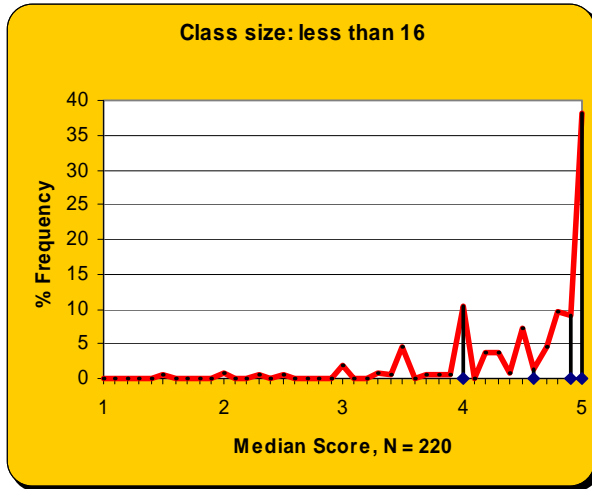
### Fall 2001 – Spring 2005

Class Size	N	Median	Cut1	Cut 2	Cut 3	Cut 4
< 16	220	4.79	4.00	4.63	4.89	5.00
16 – 35	211	4.50	3.94	4.25	4.66	4.81
36 – 99	528	4.25	3.85	4.14	4.39	4.65
> 99	64	4.32	3.94	4.18	4.44	4.63

---

# Descriptive Statistics for Item 10 2001-2005

Fall 2001 – Spring 2005



## COLLEGE OF SCIENCES

### Fall 2004

Class Size	N	Median	Cut1	Cut 2	Cut 3	Cut 4
< 16	220	4.50	4.00	4.25	4.75	5.00
16 – 35	290	4.00	3.33	3.93	4.10	4.50
36 – 99	102	4.02	3.56	3.92	4.11	4.52
> 99	47	3.95	3.51	3.87	4.02	4.26

### Spring 2005

Class Size	N	Median	Cut1	Cut 2	Cut 3	Cut 4
< 16	254	4.25	3.50	4.00	4.50	5.00
16 – 35	247	4.00	3.36	3.83	4.06	4.46
36 – 99	81	4.00	3.58	3.83	4.06	4.40
> 99	43	3.96	3.44	3.86	4.01	4.38

### Fall 2001 – Spring 2005

Class Size	N	Median	Cut1	Cut 2	Cut 3	Cut 4
< 16	1792	4.25	3.75	4.00	4.50	5.00
16 – 35	2670	4.00	3.38	3.90	4.17	4.58
36 – 99	884	4.08	3.63	3.99	4.21	4.56
> 99	294	3.98	3.63	3.91	4.06	4.27

---

# Descriptive Statistics for Item 10 2001-2005

## Fall 2001 – Spring 2005

